

DRIVE

# SCENIC RIM

QUEENSLAND - SUNSHINE STATE



TAMBORINE MOUNTAIN • BEAUDESERT • BOONAH • KALBAR • THE LOST WORLD • RATHDOWNEY  
BEECHMONT • HARRISVILLE • CANUNGRA • ARATULA

[visitscenicrim.com.au](http://visitscenicrim.com.au)



# Drive the Scenic Rim

There is a sense of exploration on a drive holiday. And in the Scenic Rim, there is something new to discover around every corner, at the end of every country road.

With regional towns forming population centres and charming country villages dotting the stunning expanse of mountains, lakes, creeks and parks, it's easy to create an itinerary full of the things you love, and those that will surprise you.

<b>TAMBORINE MOUNTAIN REGION</b> .....	<b>04</b>
Nature's Playground.....	06
Get Your Blood Pumping.....	10
Sips and Nibbles.....	12
Retail Therapy.....	14
<b>CANUNGRA TO LAMINGTON NATIONAL PARK</b> .....	<b>16</b>
Walks of Wonder.....	18
<b>BEAUDESERT AND SURROUNDS</b> .....	<b>22</b>
Waterways and Gateways.....	24
<b>THE LOST WORLD</b> .....	<b>26</b>
Farm Life and Secrets to Uncover.....	27
<b>MOUNT BARNEY AND RATHDOWNEY</b> .....	<b>30</b>
Adventure Designed by Nature.....	32
<b>BOONAH AND SURROUNDS</b> .....	<b>34</b>
Get Active.....	35
Flavour Foundations.....	38
Stay a Little Longer.....	42
<b>KALBAR AND SURROUNDS</b> .....	<b>46</b>
Flowers, Farms and Camels.....	47
<b>FARM GATE</b> .....	<b>50</b>
Country Charm and Life on the Land.....	51
<b>SCENIC SIPS</b> .....	<b>56</b>
Wine, Spirits and a Craft Beer.....	57
<b>INFORMATION CENTRES</b> .....	<b>60</b>
<b>SCENIC EVENTS</b> .....	<b>62</b>
<b>DIRECTORY</b> .....	<b>64</b>
<b>CONTACT</b> .....	<b>68</b>



SOUTH EAST QUEENSLAND AUSTRALIA

**MAP LEGEND**

- Motorway
- Highway
- Main road
- Minor road
- Railway & station
- Road distance in kilometres
- Steep road
- Road route markers
- Bicentennial National Trail
- State boundary
- Council boundary
- Airport, airfield
- Accredited Visitor Information Centre
- Hospital
- National park/ Conservation area
- State forest
- Scenic Rim
- Regional Council



This guide breaks the Scenic Rim into bite-sized regions. Plan an unforgettable day trip or a multiple-day epic journey.

The Scenic Rim is less than 60 minutes drive south west of Brisbane and west of the Gold Coast. The region itself is an expanse of more than 4,000 square kilometres, three times the size of Brisbane.

The Scenic Rim is accessible via the following main roads:

- Bruce Highway
- Brisbane Valley Highway
- Ipswich Road/Motorway
- Cunningham Highway
- New England Highway
- Beaudesert Road
- Mt Lindesay Highway
- Pacific Motorway via Tamborine Oxenford Road and Beaudesert Newry Road
- Gateway Arterial

As you cross the ancient and abundant landscape of the Scenic Rim, we ask that you acknowledge and pay respect to the traditional custodians of the countries travelled - The Yugambah and Jagera language groups of the Wangerriburra to the East, the Mununjali in the centre and the Ugarapul to the West, in whose ancestors' footsteps we tread today.

[visitscenicrim.com.au](http://visitscenicrim.com.au)



# TAMBORINE MOUNTAIN



Tamborine Rainforest Skywalk

Welcome to a land of lush green mountains that will have you longing to get your head lost in the clouds.

Just a one-hour drive from Brisbane or 45 minutes from the Gold Coast, Tamborine Mountain is lovingly referred to as the green behind the gold.

These short itineraries will have you marvelling at scenery around every corner, sharing unforgettable wildlife experiences, meeting the artisans behind

award-winning local products, indulging in heavenly paddock-to-plate dining and luxury accommodation, and adventure experiences to make your heart pump.

Tamborine Mountain offers a hundred different ways to experience one of the most stunning hinterland destinations you can find. What will you explore first?



*Boutique Liqueurs  
& Spirits*

*Natural ingredients  
and native flora*



## The Spirit of Tradition

10 Macdonnell Road, Tamborine Mountain

TASTING ROOM • OPEN 7 DAYS • 10AM - 5PM

Book online via website or call 07 5545 3452



# Nature's Playground



Tree Top Challenge

## This Tamboorine Mountain nature itinerary includes Queensland's first National Park, sky-high forest walks and unforgettable wildlife encounters.

With so many natural attractions within a 30 minute drive of Tamboorine Mountain, you'll be able to see a lot in a short time or do as nature intended – slow down and connect with this very special part of the world.

Begin with an exploration of beautiful local parks set high on top of the mountain. Doughty Park is a favourite for its towering trees, shady picnic tables, playground and lookout. It's also home of the Tamboorine Mountain Visitor Information Centre.

Head just a few minutes south into the grounds of Cedar Creek Estate to uncover a wildlife experience that will light up your day.

You'll find an award-winning sanctuary for *Arachnocampa flava* or glow worms. Tour during the day to see these clever creatures up close, or tour by night and marvel as the cave roof and walls light up with thousands of glow worms.



Take a tour through ancient Gondwana Rainforest, to the edge of a running waterfall and an expansive rock bridge that was naturally formed by thousands of years of water flow.



Curtis Falls



Head north-east through the hinterland to the stunning Tamboorine Mountain Regional Botanic Gardens, a sanctuary of exotic and native flora centred around a graceful lake.

Something that makes these gardens so special is the team of dynamic volunteers who are more than happy to share their knowledge and passion. These characters are part of the almost 40-year history of this 11-hectare tribute to mother nature. It's our pick for an unforgettable stroll or picturesque picnic spot.

Your next stop offers a thrilling and unique perspective on Tamboorine Mountain's stunning rainforest. Explore the canopy from a height usually reserved for birds, as you wander the Tamboorine Rainforest Skywalk's elevated walkway and cantilever. Aside from exceptional views, you'll witness birdlife not visible from the ground.

Continue north to explore Queensland's oldest National Park. The Tamboorine National Park is home to the stunning Cedar Creek Falls. Here you'll find a lookout over the gorge, falls and rock pools. Don't forget your swimmers. This spot is a favourite for locals seeking to cool off.

Walk under soaring flooded gum trees, among a carpet of bracken fern woodlands and along the base of cascading waterfalls. Spot bush turkeys, the world's largest skink, the colourful wings of the Richmond birdwing butterfly and listen for the call of the Albert's lyrebird.



## tamboorine rainforest Skywalk

Discover a different and thrilling way to explore the beautiful rainforest canopies...

- Spectacular Elevated Rainforest Canopy Walk
- Skywalk Cantilever
- Rainforest Interpretive Gallery
- Café
- Gift Shop
- Parking

Open Every Day (Except Christmas Day) from 9.30am to the last walk at 4pm (Closes at 5pm)

Suitable walking shoes recommended

333 Geissmann Drive (off Tamboorine Mountain Road) North Tamboorine, Queensland

info@rainforestskywalk.com.au

07 5545 2222

skywalktamboorine.com



## Wonderous Walks

### Curtis Falls Walking Track

Take a cool walk through the eucalypt forest, spotting staghorn ferns in the canopy before the Curtis Falls take your breath away. A curtain of water tumbles over huge basalt columns into a pool that is home to basking turtles and families of playful platypus. A short 1km walk from Dapsang Drive Car Park.



### Witches Falls Lookout Walk

Let the whispered song of the waterfall be a soundtrack to your walk before rewarding yourself with rolling waves of green, forested mountains from the lookout. You'll feel like you're touching the clouds. A 2.4km moderate trek accessible via Beacon Road or Main Western Road.



### Palm Grove Circuit

This Tamborine Mountain National Park loop will have you in awe of the giant palm groves, tall tree roots and abundant wildlife. An easy 2.3km walk accessible via Palm Grove Avenue.



**Australian OUTBACK OPALS**

**Australian Outback OPALS**

[OutbackOpals.com.au](http://OutbackOpals.com.au)  
See online for opening hours

1-5 Eagle Heights Rd, Tamborine Mountain  
**07 5545 0888**

# GLOW WORM TOURS

A CONSERVATION INITIATIVE  
MARVEL AT NATURE'S LIVING LIGHTS ON AN EXPERT-GUIDED TOUR  
EVERYDAY FROM 10AM

CHECK ONLINE FOR TOUR DEPARTURE TIMES

CEDAR CREEK ESTATE  
**eco CERTIFIED Tourism**

CEDAR CREEK ESTATE  
104-144 Hartley Rd, Tamborine Mountain, QLD 4272 Australia - Phone (07) 5545 1666  
[TAMBORINEGLOWWORMS.COM.AU](http://TAMBORINEGLOWWORMS.COM.AU)

**Lemon Lovers GELATO**

**ITALIAN STYLE ICE CREAM**  
No artificial colours and flavours.  
No gelatine. Mostly gluten free, some vegan.

1-5 Eagle Heights Road, Tamborine Mtn  
**07 5545 1444**

**Tall Trees MOTEL**  
Mountain Retreat  
Boutique Motel Accommodation

[www.talltreesmotel.com.au](http://www.talltreesmotel.com.au)  
**07 5545 1242**

# Get Your Blood Pumping



Curtis Falls Tamboorine Mountain

Tamboorine Mountain is a stunning natural playground. What better way to explore it than by doing something that challenges you? Something you'll talk about for years to come.

Your heart jumps as air rushes into the balloon and you feel the moment of lift off, then soar high above the mountains in the basket of a hot air balloon. A flight with Hot Air Balloon Scenic Rim offers 360 degrees of Instagram moments.

Put your feet back on earth and head north to Australia's number one adventure playground, Thunderbird Park. Test your nerves on treetop high ropes courses, zip lines, pony rides or even the thrill of fossicking for crystals. Camp, glamp or stay in onsite contemporary accommodation at Cedar Creek Lodges, so you can continue the adventure the next day.

This Tamboorine Mountain itinerary offers unforgettable ways to experience this stunning natural playground.



# WHERE ADVENTURE JOINS Nature

[www.thunderbirdpark.com.au](http://www.thunderbirdpark.com.au)



AUSTRALIA'S #1 ADVENTURE PLAYGROUND



07 5545 7900

Thunderbird Park®

Corner Cedar Creek Falls Road  
Tamboorine Mountain QLD 4272  
[info@thunderbirdpark.com.au](mailto:info@thunderbirdpark.com.au)

# Sips and Nibbles



**In a region blessed with rich soils and nourished by sunshine, it is no surprise that dining on paddock-to-plate cuisine and sipping at cellar doors is key to truly understanding what makes Tamborine Mountain so special.**

Begin your culinary adventure at Australia's most awarded distillery, sampling Tamborine Mountain Distillery's boutique liqueurs and spirits. Every sip has been lovingly refined over almost 30 years from European family recipes. Indulge in a Choc Mint Liqueur or something more locally inspired in the Lilly Pilly Gin or Wattle Toffee Liqueur.

Head a few minutes south to Tamborine Mountain's newest distillery. Cauldron Distillery is the creation of three mates who committed to making their dream a reality. Create a memento of your visit by sampling boutique gins and trying out your brush skills at a Paint and Sip event.



Just minutes away, your next stop is the elegant and charming Cedar Creek Estate Vineyard and Winery. The picturesque grounds make for a grand entrance, ahead of a cosy lunch venue among glorious garden views. Menu items include local produce and products made with love. Team the spiced lamb skewers with a Syrah Shiraz.



**A little to the east you'll find Witches Falls Winery, the home of hand-crafted reds, crisp buttery whites and a philosophy of careful balance. Sample the tightrope of flavours on a picnic rug among the vines.**

Pop over to Picnic Real Food Bar at North Stores, where you'll find nourishing sweet treats and savoury snacks to fuel your journey. With a focus on clean eating, their wide range of fresh salads, daily in-house baked pastries and wholefood treats will have you torn for choice! Be sure to pick up a picnic box, so you can enjoy the delicious local food no matter your next destination.

When it's time for an afternoon pick-me-up, venture around the corner to Lemon Lovers Gelato. Stocking an extensive range of traditional, vegan and gourmet adults-only flavours, choosing a flavour may be the hardest decision you'll make today!

## Tamborine Tours



### The Vino Bus

Simply choose if you'd like your Tamborine wines enjoyed with bowls of culinary goodness, high tea or golf, and the crew at The Vino Bus will do the rest.



### Southern Cross Tours

Choose between food and wine experiences, national parks, glow worms and more. Experience the Hinterland and Scenic Rim through the eyes of a local.

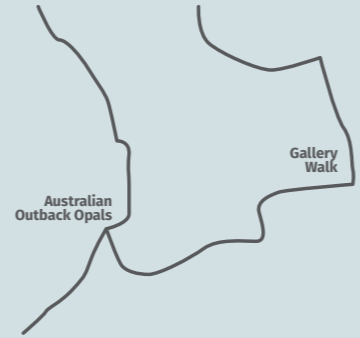


### Cork 'n Fork

Let someone else do the driving and indulge in more than a sip at four of Tamborine Mountain's amazing boutique wineries and cellar doors.



# Retail Therapy



While countless cellar doors are perfect places to pick up tasty souvenirs, there are other retail hot spots that are a must on your Tamborine Mountain drive itinerary.

Just east of the Main Street you can learn about how opals are formed, mined, cut and designed into unique, one-of-a-kind pieces of jewellery. Australian Outback Opals offers a diversity of colours, patterns and quality to ensure there is an opal souvenir for every budget.

Drive a few minutes further east to uncover Gallery Walk, a famous collection of galleries, boutique clothing and accessories, antiques, markets and locally-crafted gifts and souvenirs. There are plenty of cafes and gourmet goodies to sustain you on your shopping spree.



## When you don't want to leave

With so much to see and so many ways to enjoy this hinterland sanctuary in the clouds, it's lucky that Tamborine Mountain offers a diversity of accommodation to suit any taste.

Stylish retreat-focused lodges set among the mountains, the rustic chicness of a glamping adventure or a bed and breakfast with old world charm, Tamborine Mountain accommodation has as much character as the region has natural beauty.



### Mountain Sanctuary B&B

Warm home-style hospitality abounds as you enjoy views from the balcony, cuddles by the fireplace and a full breakfast to sustain your day's adventures.



### Cedar Creek Lodges

Unplug and escape in a stylish, self-contained lodge or luxury glamping tent. Slow down and connect with nature. Onsite dining is offered at the Rainforest Restaurant and Lounge Bar.



**My Country Escape**  
FASHION AND HOMEWARES BOUTIQUE

*Relax, browse, stay for awhile*



My Country Escape, a unique shopping experience.  
Winner of "Best in Retail" Scenic Rim.  
Boutique homewares, clothing and gifts.

29 Christie St, Canungra  
(07) 5543 4042

@MyCountryEscape

[www.mycountryescape.com.au](http://www.mycountryescape.com.au)



# CANUNGRA 2 LAMINGTON

## NATIONAL PARK

Lace up those walking shoes. This itinerary includes wonderlands of forest, colourful birds, waterfalls, caves, oh, and alpacas. That's right, alpacas.

You'll find legendary rainforest retreats and eclectic country stores with rows and rows of treasures well worth exploring. There is a special magic to discovering the awe of nature. It's like a medicine, an elixir for wellbeing. Get your camera ready, we're about to begin.



### ESCAPE, EXPERIENCE, CONNECT

Nestled at 930m within World Heritage listed Lamington National Park, O'Reilly's Rainforest Retreat is a birding and waterfall paradise – only 90 minutes from the Gold Coast and 2 hours from Brisbane.

Stay in Retreat, Villa or Campground accommodation. Go on thrilling activities, tours and guided walks with our Discovery Program, or simply indulge and pamper yourself at our award winning Lost World Spa and Infinity Pool.

STAY LONGER ON REGULAR RATES TO GET 15% OFF FOR 3 NIGHT STAYS OR 25% OFF FOR 5 NIGHTS - CALL RESERVATIONS ON 1800 688 722



www.oreillys.com.au

3582 Lamington National Park Rd | @oreillysrainforestretreat  
Image: Tourism & Events Queensland

# LOVE ALPACAS? NO PROBLLAMAS!



- Alpaca Experiences
- Alpaca Picnics
- Great for Families
- Pizza, Wine & Cheese
- Luxe Packages for 2



- No Entry Fee
- Plenty of Parking
- Relax by Canungra Creek
- Country Vineyard Setting
- Open 7 Days

### THE ALPACA FARM IN A VINEYARD

Ph: 0490 973 865 • Email: mountviewalpaca farm@gmail.com • Book: www.mountviewfarm.com.au  
852 LAMINGTON NATIONAL PARK RD, CANUNGRA • WITHIN THE GROUNDS OF O'REILLY'S VINEYARD

# Walks of Wonder



O'Reilly's Campground

The charming village of Canungra marks the beginning of an itinerary packed full of country living experiences and walks through ancient lands.

Located in the foothills of Lamington National Park, Canungra has sawmilling in its DNA. Marvel at the beautiful timber from inside historic St Luke's Church or stroll the town streets for local antiques and specialty items.

Many stores are the loving passion of proud locals who seek to showcase their home region. Find a taste of country charm at My Country Escape, a boutique fashion and homewares store that showcases the country's timeless design aesthetic through specialty skincare, art, clothing and home items.

Fossick through the aisles of Canungra Books and Art's eclectic mix of books, records, vintage clothing and artisan treasures. Owner Jan has lovingly collected thousands of second-hand books, classics and vintage works.



### HAND MADE HAPPINESS

Outside town you'll find a community of tenacious farmers, gifted producers and artisans with goodies worth exploring.

### Pretty Produce

Simone and Dave spend their days transforming their flowers into chemical-free edible garnishes, teas and pressed flower creations. Look out for events for the chance to visit.

### Canungra Creek Finger Limes

Once a property for grazing cattle, Canungra Creek Fingerlimes is now home to 200 native finger lime trees that produce fruit for marmalades, preserves and skin care products available online and from Canungra Village Markets.



### CANUNGRA CREEK FINGERLIMES

At our Canungra farm we grow finger limes, a native Australian citrus. We sell fresh fruit, marmalade and a skincare range which includes skin serum, hand cream and soap.

BOOKING BY APPOINTMENT ONLY

72 Double Crossing Road, Canungra  
Phone: 07 5543 5516

Email: [info@canungrafingerlimes.com.au](mailto:info@canungrafingerlimes.com.au)  
Website: [www.canungrafingerlimes.com.au](http://www.canungrafingerlimes.com.au)



### CANUNGRA BOOKS & ART

Eclectic range of quality second-hand books - antiquarian to contemporary. Local author new books. Art, prints and gifts. Vintage clothing and records.

Opening hours: 9.30am to 4.00pm daily

6 Kidston Street (first on left), Canungra  
Phone: 0418 792 161

Facebook: [canungrabooksandart](https://www.facebook.com/canungrabooksandart)  
Website: [canungrabooksandart.com.au](http://canungrabooksandart.com.au)



South of Canungra lies the immense Lamington National Park and plenty to see and do on the way. Accessible from multiple points you can choose to head south via Sarabah or Beechmont.

### SOUTH VIA SARABAH

With your tummy no doubt rumbling, head south to Canungra Valley Vineyards. Here you can taste award-winning artisan wine made from hand harvested grapes, indulge in a restaurant meal in the 163-year-old homestead or book a picnic basket and find a spot by the creek.

Before you leave, there are some very important locals that you simply have to meet. Introducing the more than 70 alpacas that call Mountview Alpacas home. Have a romantic picnic for two among the alpacas or a family pizza picnic before feeding Wynona, Ginger and Zombilina. If you continue south, you'll find yourself at O'Reilly's Rainforest Retreat and the expansive Lamington National Park. The retreat has welcomed guests for over 96 years. Aside from offering a choice of accommodation styles, it is a nature-focused playground.

Feed the birds, see more by scooting around on a Segway, be awed by the 'Birds of Prey' show or strap in for the 'Flying Fox Adventure'. There are plenty of walks and trails to introduce you to the wonders of Lamington National Park. Join the birds in an early morning song from the Tree Top Walk deck, 30 metres up in the air.



### SOUTH VIA BEECHMONT

The best way to access the Binna Burra section of Lamington National Park is to head south via Beechmont, in the land of the Yugambah people. The village was settled in the 1800s for timber but is now a popular destination for bushwalkers. You'll also find hanggliders and paragliders enamoured with the region, launching into stunning hinterland views from Rosin's Lookout.

Head south to find yourself in the Binna Burra section of Lamington National Park. Registered in 1915, Lamington National Park offers extensive walking tracks along the McPherson Range, dramatic lookouts and the opportunity to experience the bountiful life of Australia's World Heritage listed, ancient Gondwana Rainforest.



★★★★ TRIPADVISOR 5-STAR REVIEWS    BREAKFAST BASKET    FREE WIFI    MOUNTAIN VIEWS



Contemporary cottages with rustic charm, set against a backdrop of Greenlee Farm macadamia orchard.

Soak up the Canungra Valley from your deck. Listen to the Canungra Creek flowing by. Relax and immerse yourself in nature with native wildlife and birdlife on your doorstep.

Our two-bedroom cottage is suitable for those with accessible needs.

BOOK NOW AT [GREENLEECOTTAGES.COM.AU](http://GREENLEECOTTAGES.COM.AU) • 45 RYMERA ROAD, CANUNGRA • (07) 5543 4021



# Our Favourite Walks

If you can't decide which path to take, put your trust in Park Tours. Offering guided walking holidays since 1975, Park Tours can take you on an exclusive five-day journey from Binna Burra to O'Reilly's on to the Lost World Valley and Mt Barney National Park.



## Short Walks

### PYTHON ROCK AND MORAN FALLS TRAILHEAD

Grade 1 • 1.8km (30 minutes)

Step back in time along the historic Centenary Track. Wind through aromatic forests filled with eastern yellow robins and satin bowerbirds. Keep an eye out for Albert's lyrebird scratching through the leaf litter that carpets the forest floor.

### BINNA BURRA TRAILHEAD

Grade 4 • 7km (2 hours)

From Binna Burra lower day-use area, find the Cave Track and wind your way through the open eucalypt forest. Keep your eyes high to watch for koalas or white-throated treecreepers. You'll pass Kweebani Cave before witnessing the forest transform into rainforest.



## Long Walks

### GREEN MOUNTAINS TRAILHEAD

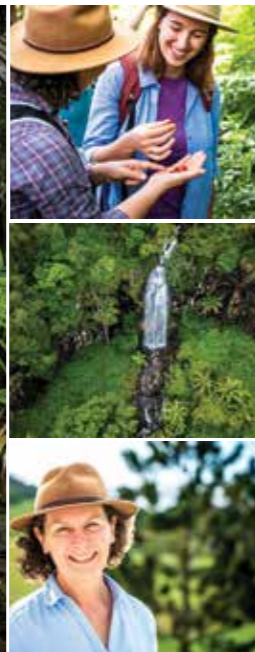
Grade 4 • 13.9km (5.5 hours)

Begin at the trailhead in the Green Mountains day-use area along the Border Track for 600m before branching off onto the West Canungra Creek circuit track. Descend past Darraboola Falls to the tranquil waters of Yerralahla, named for the local Indigenous word for blue pool. Skip from stone to stone across the creek. Look in ripples and deeper pools for eels, fish and the bright blue of Lamington spiny crayfish.

### SADDLE TRAILHEAD

Grade 4 • 21km (8 hours)

The Ships Stern Circuit is famous for its incredible diversity. Endless views, cascading waterfalls, mighty ranges and plunging valleys make this easily one of the most magnificent walks in the park. Descend into Nixon Valley past the white curtain of Ballunjui Falls and Nixon Creek to the top of Ships Stern Range.



## WALKING HOLIDAYS & ADVENTURES

There is a world of wild places to explore

- Experience the true character of the Scenic Rim through the eyes of locals
- Small group journeys, 3-5 nights
- Private tours and guided day walks also available

Information and bookings via Park Tours website

E: [info@parktours.com.au](mailto:info@parktours.com.au)

T: (07) 5533 3583

W: [parktours.com.au](http://parktours.com.au)



# Lay your head down on a pillow

Inspired by the unbridled, wild beauty of Lamington National Park, accommodation in this region makes the most of simple country living pleasures and irreplaceable views.



## Farm charm...

Greenlee Cottages lies in the foothills of the Darlington Range. Read a book on your balcony overlooking the mountains, with the macadamia orchard behind you.

## A little bit of romance...

Fifteen minutes south of Canungra, Country Mile Escape offers boutique accommodation with romantic design features. Snuggle by the fireplace or indulge in an in-room massage.

## A playground...

O'Reilly's Rainforest Retreat is a playground of activities focused on celebrating the Lamington National Park. Feed birds and ride Segways before retiring to the guesthouse, a hillside villa or the seclusion of a safari tent or campground.

## Ancient nature...

At Binna Burra Mountain Lodge you can feel among nature in the campground or a permanent safari tent. Or choose a little bit of opulence in the apartment-style sky lodge.



## A little luxury...

Hazelwood Estate is a wagyu and polo farm set in rolling hills. There is a country elegance and real sense of escape to the Estate and a chef-hatted paddock restaurant.



## Immerse yourself in a world of serenity in Canungra

Sit on the veranda and have a long breakfast, make friends with the birds that visit the garden, watch the wind dance with the grass as it tells its story for the day. As the sun disappears and makes its sunset painting of colour, sit around the fire and take in the view.



Book online at [countrymileescape.com.au](http://countrymileescape.com.au) • Contact Trish on 0419 090 246 Country Mile Escape @country\_mile\_escape

# BEAUDESERT

AND SURROUNDS

Introducing an itinerary full of panoramic views, honey sweet farm stops, handmade deliciousness and buildings with stories that are hundreds of years old.



## BEAUDESERT REGION

# Waterways and Gateways



**This itinerary is full of opportunities to experience the charm of life on the land. Stay in country cottages and feed your inner farmer.**

Whether behind the wheel, armed with a paddle or a knife and fork in hand, there are plenty of ways to make the most of every gem you'll find on this path.

Let's begin at a location you'll never forget. It's time to indulge at The Overflow Estate 1895. Once a cattle farm, this Estate is set on the edge of Lake Wyaralong, surrounded by water and rows of vines running down the hill.

Sample the wares of this boutique viticultural operation at the cellar door or dine on Chef Olivier's traditional French cooking inspired gourmet café menu.

Con and his team often offer live music and other special menu events.

When the site of Lake Wyaralong's expansive waters becomes too tempting, the lake's facilities offer plenty of ways to enjoy the newest dam in South East Queensland. Grab a paddle and kayak and spot birds and fish on your trip or walk to the Ngumbi Camp Site for great bush walking, horse riding and mountain biking trails.

Dry off and head south east to the gateway town of the Scenic Rim, Beaudesert.

A masterpiece of rolling farmlands and windmill-lined blue skies, Beaudesert has stories to tell. They lie in the hearts of country pubs, on the walls of museums and galleries, and in the passion and talent of those lucky enough to call Beaudesert home.

**Walk the streets and be greeted by the genuine smiles of the locals that pass you by.**

Time your visit right and you'll see the Beaudesert region on display at the monthly MarketFest. The first Saturday of every month more than 150 stall holders showcase country baked goods, handcrafted products, antiques and local produce, sold among the market atmosphere of donkey rides and face painting.

From Beaudesert we head south towards Kooralbyn. Before you reach the village you'll find two unique accommodation options. The first is The Old Laravale School. Once a school that opened in 1900, the grounds offer a renovated country farmhouse. The school building is now a dedicated craft workroom which is perfect for sewing and craft retreats for small groups.

The second stop is only a few minutes further down the road. Murphy's Country Accommodation is a picture-perfect white cottage set among a cattle property. The newly renovated three-bedroom cottage features an open plan design and stunning views from the bathtub. Feel free to bring along your dog to utilise the enclosed yard.

Continue on to Kooralbyn, or The Valley as commonly referred to by the locals. Kooralbyn is a Yugambah word meaning the place of the copperhead snake. Originally settled by John 'Tinker' Campbell, Kooralbyn was an 1830s timber town that became one of the region's most significant pastoral estates.

Finish this itinerary under the gumtrees at The Copperhead Café. Inside this quaint house is a roaring fire that enlivens menu items with coal and fire cooking. Delicious coffee brews all day, but the licensed venue also offers your favourite sips with lunch. Take home some amazing sourdough and house made preserves to keep your Beaudesert region memories alive.



**Farm Gate stops**

Discover the simple pleasures of life on the land at these two farm gate stops, adding a little delicious to the itinerary.



**Towri Sheep Cheese**

Carolyn had a lifelong passion for gourmet cheese. Her love drove her to cheese-making courses and a 300-acre dairy where she now makes award-winning, hand-crafted sheep milk cheeses. Join her, her daughter Dallas and their family of Jack Russells to tour the facility. Open on the first Saturday of each month. Milking demonstration at 10am. Come along to cuddle their sheep and create your own sheep cheese platter paired with local produce from the Towri farm shop to enjoy in the garden.



**Bee All Natural**

Witness how the Roebig family work in harmony with their bees to produce premium quality award-winning raw honey, then turn that liquid gold into chemical-free, artisan food, skincare and home products. Nothing is sweeter than buying straight from the beekeeper – unless you're buying the Three Stings Ridiculously Hot Raw Honey. Please note that this is a working farm. Farm Gate stops are available by appointment only.



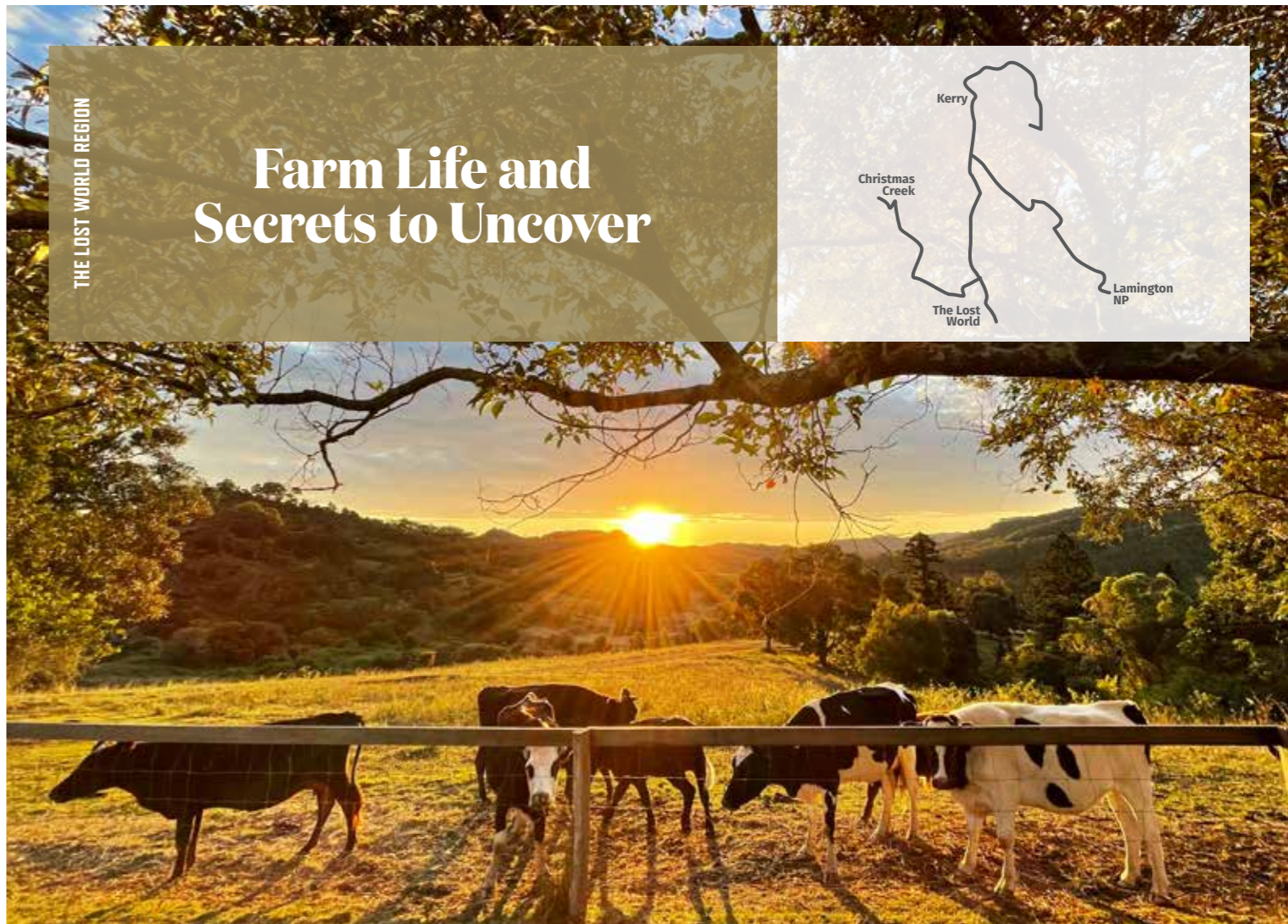
**THE OVERFLOW ESTATE 1895 - CELLAR DOOR & BISTRO**

1660 Beaudesert-Boonah Rd, Beaudesert, QLD 4285

www.theoverflowestate1895.com.au - 0455 22 1895

# THE LOST WORLD

The Lost World is actually a hidden plateau, a green shelf on Razorback Mountain, found long ago by the adventurous O'Reilly's who imagined that anything could have remained hidden on this magical step between mountain and sky.



The valleys below are very beautiful, where today the hustle and stress of the outside world is easily lost.

Your journey south from Beaudesert takes you through the lush Kerry Valley where the only traffic jams are caused by dairy cows ambling across the road at a pace typical of local life, and fields of crops, adorned with cockatoos and careening galahs, stretch green and lush

along the fertile plains of the Albert River. Soon the Valleys narrow into Darlington and Christmas Creek where the World Heritage listed mountains of Lamington National Park surround you on all sides.



**WORENDO**

Luxury on the edge of wilderness

Set in the Lost World Valley and overlooking World Heritage Rainforest Mountains, Worendo provides an escape from the fast lane in a stunning and peaceful wilderness setting.

97 Cedar Glen Road  
The Lost World  
Scenic Rim QLD 4285

0422 587 567 • worendo.com



# Fallen in love already?



It's easy to fall in love with the magic of this place. Luckily here are three of our favourite places to stay.



### Country Romance

At Moongalba Cottage, soak in the rural view, the sunsets, and indulge in the private aromatherapy spa. Watch the wildlife and farm animals from the verandah, sit around the fire or explore the creek and walking tracks on this working cattle farm.

### Barn Break

At Yalbaroo Scenic Rim Retreat you can enjoy a private outlook from an old barn that has been converted to The Stables Cabin. This country setting is perfect for picnics under the trees, wine and cheese in the horse stables.

### Life on the Farm

The Farm at Duck Creek is set among undulating hills. This self-contained cabin offers the chance to laze with a book on a huge deck or cook up a family feast in the pizza oven. Well behaved dogs welcome.

### Old School Charm

Stay at Kirro, a renovated homestead and the perfect marriage of formal living and dining areas, outdoor spaces, cosy bedrooms and a pet-friendly yard.

Stop for a coffee and a swim at Darlington Park or Christmas Creek Cafe. Take on an adrenaline fuelled hike to discover lost secrets of the famed Stinson Plane wreck, or make a day visit to Cedar Glen Farmstay to pick up a picnic box, or get up close with an animal encounter. It will be hard to leave, and you don't have to. These Valleys are dotted with picturesque places to stay. Everything from Camp Grounds, Farm Stays, Luxury Cabins and Safari Glamping Tents are on offer. Complete your drive circuit by meandering west through country lanes and horse studs to Rathdowney, or north following Christmas Creek as it winds its way back towards Beaudesert through this land of mountains and streams.

If you're looking for something a bit more relaxed, make a stop at Christmas Creek café and take on the giant 'Stinson Burger'. Enjoy a coffee looking up into the Lamington Wilderness and Mount Westray.

Once you're ready to work off lunch, stop at Stinson Park

### For the fit and brave, a 5-hour hike awaits you. Embark on Westray's Grave hike to revisit history.

This itinerary brings you to the unforgettable diversity and wild beauty of Lamington National Park. Check out the Walks of Wonder itinerary on page 18 for more details.

### Is it that time?

This late in the itinerary you may be looking for a place to stay. Here are some of our southern options.

**Wongari Eco Retreat** is at the edge of Lamington National Park. You'll uncover two private cabins immersed in wilderness and set beside Christmas Creek.

**Eighteen Mile Cottage and Homestead** is set among 500+ acres of mountains and pastures in a secluded section of the Upper Albert River.

**Cedar Glen Farmstay** is a fourth-generation working farm and is home to a private historic cottage, as well as plenty of activities including boomerang throwing, alpaca walks and guided tours of the Cedar Glen Caves.

Wake up and watch the sheep from the balcony of **Worendo Cottages**, a fully renovated homestead or luxury cottage, before feeding the animals, hiking or playing lawn games.

**Kerry Valley Secret** is an exclusive bush campsite, perfect for groups. Paddle in the babbling Stockyard Creek, check out the Albert River swimming hole and soak up the views to Lamington National Park.



Time to head south from Kerry, driving past hundreds of perfectly-spaced rows of corn. In the Summer they are often covered in masses of cockatoos, helping themselves to a corn buffet.

### Farm Gate Stops

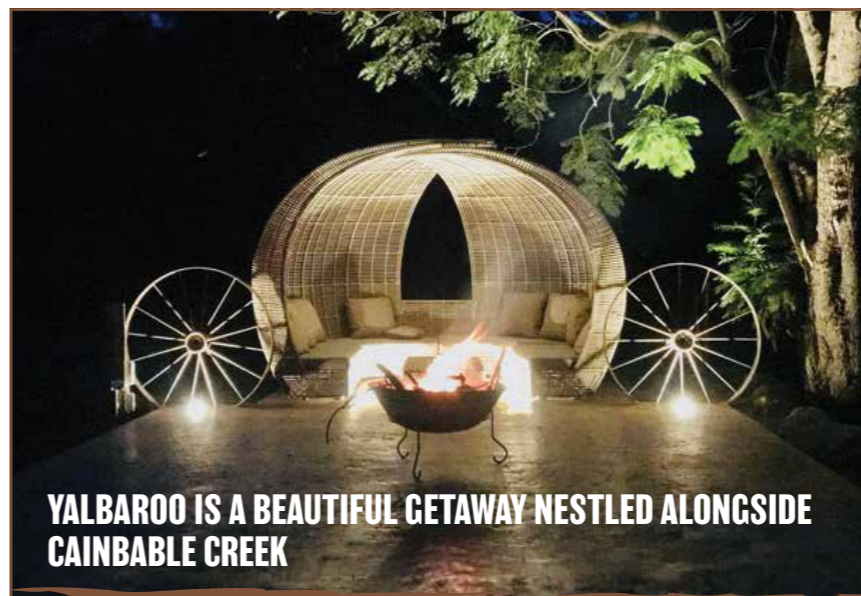
The farmers in Kerry have been growing beautiful produce for generations. The call of a country roadside stall is hard to resist, especially when it's loaded with freshly picked, spray-free pumpkins and raw honey.

White's Farm roadside stall, complete with quaint honesty box, is just next door to Tommerup's Dairy Farm where you'll find award-winning artisan dairy products, pork, veal and eggs, fresh from their 6th generation family farm. Oh, and don't forget the ice creams! Tommerup's Farm Larder is open by appointment only, so be sure to phone ahead.

Rejuvenate at Eighteen Mile Accommodation in Darlington staying in our charming cottage or spacious homestead with deck and pool. Enjoy camp fires, stargazing, bushwalking, river bathing and exploring the sprawling property.

3112 Kerry Rd. Darlington QLD 4285 • 0419 688 529

BOOK NOW @ [eighteenmile.com](http://eighteenmile.com)



YALBAROO IS A BEAUTIFUL GETAWAY NESTLED ALONGSIDE CAINBABLE CREEK



### YOUR VERY OWN TWO PERSON RETREAT AWAITS YOU.

From the outside it's nostalgic and rustic, on the inside it exudes country charm with all the modern comforts.

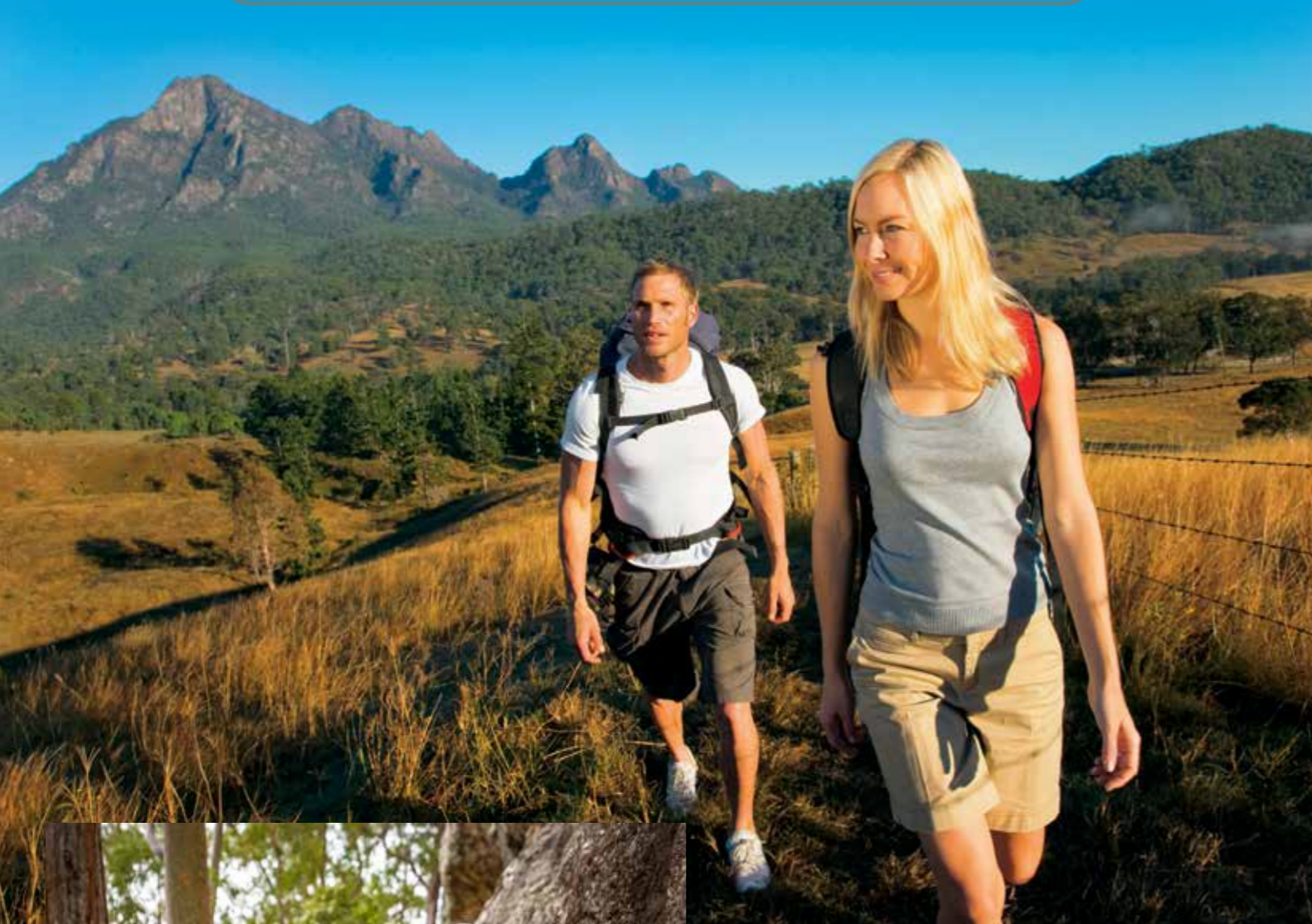
Bring your horse or your dog, meet our alpacas and miniature horses, and experience the beauty of the Scenic Rim.

Book your getaway at [www.yalbaroo.com.au](http://www.yalbaroo.com.au)  
Book camping at [www.100campfires.com.au](http://www.100campfires.com.au)

772 Cainbale Creek Rd, Cainbale info@yalbaroo.com.au 0413 181 168 @yalbarooscenicrimretreat

# MOUNT • BARN3Y

AND RATHDOWNEY



**EXPLORE  
MOUNT BARNEY**

Our property is snuggled within the impressive and wild Mt Barney National Park, perfectly positioned for exploring the many bushwalks within the park.

**GUIDED MOUNTAIN  
TOURS**

**SCENIC RIM  
ADVENTURE  
FESTIVAL**  
2023 May Long  
Weekend  
28 April - 1 May



## YOUR ADVENTURE SPECIALISTS



In the south of the Scenic Rim, this itinerary is wild. The stunning, untouched wilderness of an iconic national park combines with adventure experiences and historic farms.

Experience rugged mountains and epic heights one moment and then the genuine warmth of smiles down the main street of country villages that exude charm.

There's action for those who want a heart-pumping thrill and peace for those who need to stop. Welcome to the Rathdowney and Mt Barney region.



**ROCK  
CLIMBING**



**LODGE  
ACCOMMODATION**

For accommodation, event tickets and family adventure activities  
**BOOKINGS ARE ESSENTIAL**  
Book Online here



[info@mtbarneylodge.com.au](mailto:info@mtbarneylodge.com.au)  
07 5544 3233



@mtbarneylodge

**SCHOOL HOLIDAY  
ADVENTURE PROGRAM**





# Adventure Designed by Nature



We begin in Mt Barney National Park, a 2 hour and 10 minute drive from Brisbane or 2 hours and 25 minutes from the Gold Coast.

The park's rugged mountain peaks pierce clouds and watch down over the surrounding ancient Gondwana Rainforests. There are seven iconic mountain peaks in the park, all formed 24 million years ago when the ancient Focal Peak Shield Volcano erupted.

Today, the peaks are home to a diversity of landscapes and ecosystems and countless species of common and rare animals.



If you'd like to spend more time exploring Mt Barney, you'll find diverse accommodation at the nearby Mt Barney Lodge, as well as a year-round program of guided adventure activities.

Next, we head north east through Rathdowney. The authentic warmth of this village has been cultivated since John Rankin first took up a lease in the mid-1800s.

A look into the village's milling and dairy industries and the people of its past can be found by visiting the Rathdowney Museum.

As we arrive at the Scenic Rim Adventure Park to the north of Rathdowney, a 4WD vehicle is recommended for exploring their 28km of off-road driving. 2WD vehicles can access some campsites, where a mountain bike or bushwalking will get you around the park. 4WD awareness courses are available and dogs are welcome on a lead.

Not far from the adventure park, you'll find a spicy farm stay. Oakley Creek Farm has a four-bedroom farmhouse

nestled on a garlic, ginger, turmeric, chilli and lime farm. Harvest Café has been offering a true paddock-to-plate experience since Autumn 2022.

Stay at Running Creek Cottage in an original fully self-contained Queenslander at Running Creek Beef. Explore the farm and meet our charming horses and cattle. The fresh water Running Creek provides swimming, fishing and platypus spotting by day, whilst nights are perfect for sitting around the firepit and admiring the stars.

Keep in touch through social media and the website to hear about monthly grass-fed beef deliveries to your home, farm gate sales (via pre-arrangement), on-farm accommodation and farm events.

With so much natural beauty surrounding you, why not leave the planning to the professionals at Araucaria Ecotours. From day trips to multi-day tours, you'll find yourself exploring biodiversity hot spots.

## Lace Up

One of the best ways to experience the ancient magic of Mt Barney National Park is walking.



### CRONAN CREEK

Allow 4 hours • 12km return

The Cronan Creek track leaves from Yellow Pinch trailhead. Pass through Yellow Pinch gate and follow the trail through 5.4km of stunning ancient forests. A beautiful feature of this track is Cronan Creek Falls.



### UPPER PORTALS

Allow 3 hours • 8km return

To reach this track you'll require a 4WD. Drive about 45 minutes from the Lower Portals and the Yellow Pinch area of the park. Follow the trail until it reaches the junction of Yamahra Creek and Mount Barney Creek. Follow the creek to the Upper Portals.



get out and about  
back to nature  
and discover the  
great outdoors

## Scenic Rim ADVENTURE PARK

BUSH CAMPING | 4X4 TRACKS | BACK TO BASIC ADVENTURES

636 Tamrookum Creek, Tamrookum, QLD 4285  
0458 406 236

scenicrimadventurepark.com.au  
wendy@scenicrimadventurepark.com.au



## BARNEY CREEK

VINEYARD COTTAGES

Come and soak in the beautiful scenery or take a walk through the vineyard while tasting some of our boutique wines. We also stock homewares, gifts, deli goods and more.

198 Seidenspinner Rd, Mount Barney QLD 4287  
barneycreekcottages.com • 07 5544 3285

Open to the public 10am – 4pm  
Saturday and Sunday, April to September

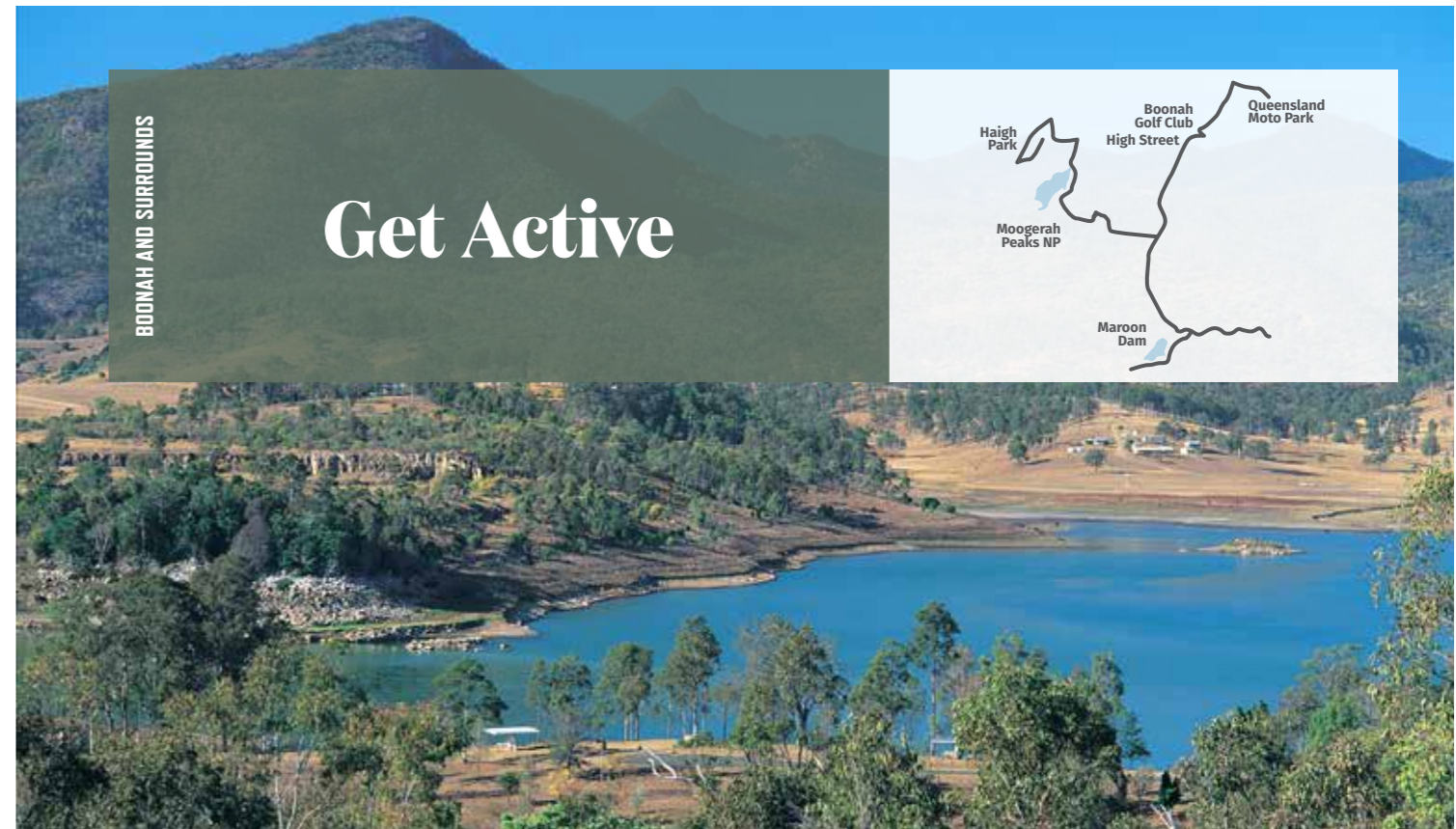


# BOONAH AND SURROUNDS

One hour and 20 minutes from Brisbane or one hour and 30 minutes from the Gold Coast, Boonah has country pride.

It wears its farming history on its sleeve, boasts a traditional country high street and that unmistakable, authentic warmth radiating from the locals whom you meet.

Nestled among heritage-listed areas and surrounded by passionate producers, Boonah is the perfect base for a Scenic Rim adventure. Discover something new around every corner.



Let's start off with a bang! Don your helmet, zip up your jacket and grab the handlebars at Queensland Moto Park. Just 12 minutes north-east of Boonah, this moto sports complex offers races and events, coaching sessions, holiday camps and half and full day riding passes.

Swap the dust for the greens of Boonah Golf Club. Professionally designed and widely acclaimed, this country course boasts some of the best greens in South East Queensland. On this 9-hole and 18-tee par 72 course, you'll find yourself sharing the fairway with kangaroos.

Before we head to the next adventure stop, take the chance to walk through the charming country High Street of Boonah. With water and hiking adventures yet to come, stock up on camping and adventure gear at Far Outdoors.

While you're shopping, step back in time into the good old fashioned country charm of Maynard's Store. Owner Greg grew up in its aisles after his grandfather founded it 78 years ago. Today, you'll find it full of practical clothing, footwear, drapery, fashion, gifts and hats.

It's time to move on to the lakes. To the south, Lake Maroon is ideal for camping and one of Queensland's most popular places for sailing, fishing, water skiing, parasailing and paddle boarding. The recreation area is great for a barbecue or picnic. It's located next to the dam wall, off Maroon Dam Road.

## BOONAH GOLF CLUB

FAIRWAY OF THE SCENIC RIM

**SCENIC RIM'S**  
Best 9 Hole Golf Course  
Boonah Golf Club

Driving Range,  
Function Rooms,  
Wedding Venues &  
the Bunkers Bistro

(07) 5463 1470 | 99 Bruckner Hill Rd, Boonah Qld 4310  
WWW.BOONAHGOLFCLUB.COM.AU



Or head south-west through the beautiful village of Mount Alford to the peaceful blue waters of Lake Moogerah. A popular location for motorised and non-motorised watersports, the peaceful waters are also wonderful for swimming. We love the swimming area next to Haigh Park, close to barbecues and picnic facilities.

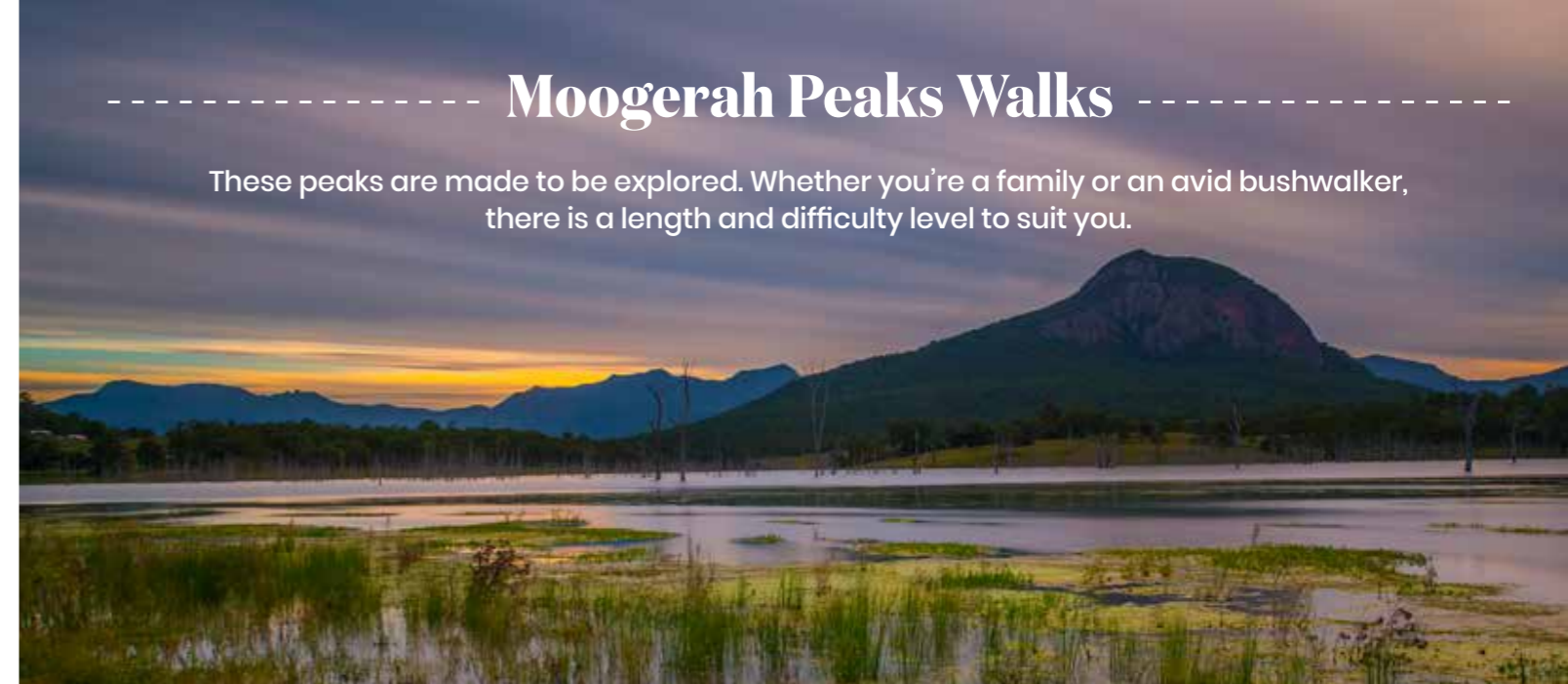


From here you can walk across the Moogerah Dam wall, watching out for turtles along the way.

You'll also find access to hiking trails up Mt Edward in Moogerah Peaks National Park.

The main access to Moogerah Peaks National Park can be found just a few minutes further north. This park is home to the ancient volcanic peaks of Mounts French, Greville, Moon and Edwards.

The park is popular for photography of its uniquely shaped peaks and excellent bushwalking trails. You'll find yourself thinking of Switzerland, minus the snow.



## Moogerah Peaks Walks

These peaks are made to be explored. Whether you're a family or an avid bushwalker, there is a length and difficulty level to suit you.

### MEEBORUM CIRCUIT

840m | 20 minutes | Easy

Suitable for the entire family this circuit includes some amazing features. You'll pass through heathland and soak in the views of Tamborine Mountain, Lamington Plateau and Mount Barney. Further along the track you'll find a second viewing platform with views across the heathland and the southern section of Mount French.

### MOUNT EDWARDS

6.5km | 3 hours | Medium

Get your heart pumping by climbing the conical-shaped Mt Edwards peak. Cross the dam wall and begin your hike, climbing 500m in elevation. The climb begins gradually, rising to a rocky slab with views of Little Mt Edwards and the gorge.

### MOUNT GREVILLE

Waterfall Gorge/Palm Gorge Circuit 6.5km | 4 hours | Hard

For experienced walkers only, this is a challenging yet rewarding walk up to the summit of Mount Greville via two beautiful gorges. Ascend via the Waterfall Gorge track, enjoy the views at the top and follow the Palm Gorge track down.

Have you met the locals?

SCENIC RIM BREWERY

www.scenicrimbrewery.com.au



**Your moto adventure starts here.**



Queensland Moto Park, Goan Rd, Coulson . Info & bookings: <http://qldmotopark.com.au/>



EST. 1944

# MAYNARDS STORE

BOONAH QLD AUSTRALIA

We welcome you to step back in time and reminisce in our old fashioned store, with country charm and service.

Specializing in Clothing, Shoes, Workwear inc. Boots, Manchester, Haberdashery and an extensive range of Patchwork Fabric.

48 High St, Boonah Qld 4310  
PH 07 54631526  
Email: [maystore@bigpond.net.au](mailto:maystore@bigpond.net.au)

# Flavour Foundations



As far as food and beverage itineraries go, this one is packed with flavours and experiences that will make you savour every bite. And everything is so close to Boonah, that you'll spend less time behind the wheel and more time with a knife and fork in hand.

We start right in the heart of Boonah, fuelling up on the Hummingbirds Natural Pantry and Café's beautiful plates of delicious vegan, vegetarian, paleo, dairy-free and gluten-free eats. Stock up on bulk wholefoods to nibble along the way.

Just a few minutes down the road, it's time to tie on your apron and let Chef Caz help sharpen your culinary skills. Choose a class from cuisines around the world or Aussie Bush Food or book your very own private cooking class with friends and family. The lesson ends in a full sit-down lunch or dinner with complimentary local beverages.

After the feast it's time for some sips. Next up we have two boutique wineries and a brewery, each with a story of passion behind it. Our first sip stop is Bunjurgun Estate Vineyard, a 60-acre property situated 10km

south of the township of Boonah. The stunning property is home to 2,200 vines, proud families of kangaroos, a well-played 1929 vintage pianola and five-acres of lawns primed for picnics.

Visit the Cellar Door and taste the vineyard's legendary rosé and lighter shiraz styles, and hear stories of 4.30am starts to long days of hand-picking grapes. Vineyard owners believe in minimising berry trauma and reducing fermentation before crushing.

Just a little further south your next sip stop is six hectares of vineyard and breathtaking lavender fields. Welcome to Kooroomba Vineyard and Lavender Farm. The Cellar Door offers boutique chardonnay, cabernet sauvignon and more, all complemented by the Kooroomba Kitchen's seasonal menus.

# KOOROOMBA

**Kooroomba has been created as a unique tourist destination, nestled in the Fassifern Valley at Mt Alford near Boonah.**

The property consists of a cellar door, the Kooroomba Restaurant and our Lavender Gift Shop, which overlooks a six hectare vineyard and breathtaking lavender fields, with magnificent views of the Scenic Rim mountains.

Kooroomba Vineyard and Lavender Farm is really the definition of a 'hidden gem' and is the perfect setting for any festivity or just a relaxing day away.

enquiries@koooomba.com.au | koooomba.com.au   @Kooroomba\_kitchen and @Kooroomba\_weddings





All the best beers have a story behind them. Scenic Rim Brewery creations not only have a story behind them but inspire those drinking them to share their own. Cheers!

ensures that there is as much to do and see here as there is to taste.

Our final taste adventure takes us to the outskirts of Mt Alford to the Scenic Rim Brewery. The cosy space is full of character with seating inside or out on the deck, both perfect places for quenching your thirst with Mike's craft beers, and filling your belly with Wendy's Dutch inspired, home-style cooking. It's easy to spend a lazy, long afternoon at the Brewery, or book a tour and find out more about Mike's Ginger

Fields of fragrant purple blossoms, a beautiful chapel and studio with an active artist in residence program



Craft Beer  
Great Food  
Family Friendly

[www.scenicrimbrewery.com.au](http://www.scenicrimbrewery.com.au)

Extra Dry Ginger Beer, Shazza Mid Strength, Digga's Pale Ale or Beauy and Blue's Spiced Pumpkin Ale from the master brewer himself.

If you need help planning a tasting tour, Local Taste Discoveries offer a Scenic Rim Farm Gate Tour or Taste of the Scenic Rim Tour, showcasing local food and beverages and behind-the-scenes access to the producer's process.

By the end of this itinerary, you'll be left with satisfied stomachs, bags full of artisan made local goodies, and a memory full of stories about characters you won't forget.



#### BUNJURGEN ESTATE

An award-winning, boutique vineyard 10km from Boonah in the Heart of the Scenic Rim. Tastings of wines produced from estate grown fruit. Picnic facilities and nature walks. Bookings essential at [www.bunjurgenestate.com.au](http://www.bunjurgenestate.com.au)  
Phone: 0417 638 736  
121 Brent Road (Cnr Brent and Bunjurgun Road)  
Bunjurgun QLD 4310



#### LOCAL TASTE DISCOVERIES

Boutique tours in the Scenic Rim. We take you behind-the-scenes to meet the producers and hear their stories. Ignite your senses, discover new flavours and taste some of the best local produce.  
Christelle Moller  
Phone: 0409857639  
[www.localtastediscoveries.com.au](http://www.localtastediscoveries.com.au)



## Hummingbirds

Natural Pantry & Cafe

A health-full bulk pantry and wholefood café providing a delicious range of vegan, vegetarian, paleo, dairy-free and gluten free eats to enjoy.

- Café - delicious wholefood
- Bulk Pantry with over 200 items, including teas, herbs and spices, nuts, dried fruit and flours
- Home care products
- Skin care ranges

Shop 4/2 Railway Street, Boonah  
Phone: (07) 5463 2878  
[hummingbirds.net.au](http://hummingbirds.net.au)



### cooking classes & accommodation

To book your class, call 0408 199 736 or email [sales@scenicrimcookingclasses.com.au](mailto:sales@scenicrimcookingclasses.com.au).

Accommodation and cooking class packages available.

[WWW.SCENICRIMCOOKINGCLASSES.COM.AU](http://WWW.SCENICRIMCOOKINGCLASSES.COM.AU)



# Stay a Little Longer



Spicers Hidden Vale

Boonah's proximity to food and beverage, nature and adventure activities, makes it a wonderful base for your Scenic Rim drive holiday. Whether you seek an authentic farm life experience or a one-of-a-kind stay surrounded by mother nature, there is an unforgettable accommodation choice for you.

## Staying in the Past



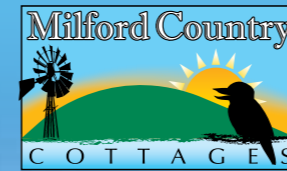
### Milford Country Cottages

Bottletree and Rose Cottage are each named for their unique character but united by a feeling of coming home. Built, owned and operated by John and Lyn, the Cottages are home to a collection of heritage horse-drawn implements.



### Old Church B&B

Originally built by hand in 1874, the church was purchased by Harry and Christelle and transformed into a B&B serving country hospitality and beautiful garden views.



Boonah accommodation | Quality affordable cottages | Heart of the Scenic Rim

**BOOK NOW** at [milfordcottages.com.au](http://milfordcottages.com.au)



Enjoy great country hospitality during your stay at our superb, uniquely hosted Bed & Breakfast accommodation near Boonah.

Offering a range of ensuited options from a King Suite to a self contained cottage. View the beautiful landscaped gardens from your private balcony.

For bookings 0415 119 817  
[www.oldchurchbnb.com.au](http://www.oldchurchbnb.com.au)

268 Evans Road, Milford QLD 4310 • 0434 621 902

MilfordCountryCottages

## Country Views



### Scenic Rim Motel Aratula Village

Perfectly located for a short drive to national parks, rainforests and Lake Moogerah, Scenic Rim Motel is set on 2.5-acres and surrounded by tranquil native gardens that can be enjoyed from your deck.

### Mount Alford Lodge

Established by the Hopson and Bell families as a place where the weary can rest, the Lodge offers a serene rural setting over 59 hectares in size. Outside of the five detached cabins, the site is also home to shared facilities in The Lodge and a boutique Christian Conference Centre.

## Farm Life

### Vanbery Cottage Host Farm

Part of the 43-acre, Dulhunty cattle property, the cottage is set high on a hill surrounded by lavender gardens that are best enjoyed from the wrap-around verandah. Helen and Terry are waiting to welcome you to their farm.

### Hanoob Views

This property includes a sleek 3-bedroom villa, and a newly renovated 2-bedroom cottage that exudes country warmth. Both are fully-fenced, dog-friendly, and set on 10-acres of rolling countryside.



Pet-friendly country retreat surrounded by dramatic rolling hills and stunning vistas.



*Hanoob Views*

Just 20mins outside of Boonah in Carneys Creek, Hanoob Views offers the ultimate place to relax and leave your troubles behind with your fur baby. Our two houses are set on a 10 acre property of undulating countryside.

**FOR BOOKINGS CONTACT YOUR HOST**  
 Maryann Sherwin on 0438 193 649  
 or via email [hanoobviews@bigpond.com](mailto:hanoobviews@bigpond.com)  
[www.hanoobviews.com](http://www.hanoobviews.com)

## At One with Nature

### Ketchup's Bank Glamping

Enjoy the adventurous spirit of camping sprinkled with a little bit of luxury. Your deluxe eco-tent is positioned on top of a ridge and features an ensuite, heated bed, alfresco kitchen, a campfire, hammock and more.

### Spieers Scenic Rim Trail

This luxury multi-day walk includes overnight stays at a new unique eco-camp each night. An authentic working farm or a sleeping pod under a gum tree, the accommodation you experience depends on how many days you walk through the dramatic peaks, ridges and escarpment of the Main Range National Park.



### A gateway to transformation

#### WANDER AT THE OVERFLOW 1895

Five secluded, eco-aware WanderPods look over Lake Wyaralong and 4000-acres of bushland, named after the stunning mountains that surround The Overflow 1895, and form the centre of the ancient caldera called the Scenic Rim. Wander is located in one of the most central areas of the Scenic Rim. Use it as your jump-off point to try some new world wines at the cellar door or discover some great day trips.



#### MOUNT ALFORD LODGE

Nestled on the foothills of Mount Alford overlooking the Border Ranges and the Great Dividing Range, a cabin at Mount Alford Lodge offers the perfect place to regenerate while exploring the Scenic Rim. 1269 Mount Alford Rd, Mount Alford QLD 4310  
 Phone: 5463 0999  
 Email [info@mountalfordlodge.com.au](mailto:info@mountalfordlodge.com.au)  
[www.mountalfordlodge.com.au](http://www.mountalfordlodge.com.au)



## WANDER

### AT THE OVERFLOW 1895

We believe travel has transformational power. Stay in design-led, eco-aware accommodation that reconnects you with nature, opens you to new experience and invites you into the story of the local Scenic Rim community.

**BOOK YOUR ACCOMMODATION NOW**

[WANDER.COM.AU](http://WANDER.COM.AU)

# KALBAR AND SURROUNDS

There are sky-high adventures and sunflowers, country villages and caramel-coloured camels. This itinerary is full of fun and unforgettable moments.

One of the most enchanting parts of this itinerary's farm stops is the opportunity to meet the producers that pour passion into the land, animals and products they produce. Get your taste buds and excitement ready, this itinerary is filled with delicious moments and picturesque views from the sky.



Kalbar Sunflower Farm

## FLOATING IMAGES Hot Air Balloon Flights

Ph. 07 3294 8770

- For Flights & Gift Vouchers
- Birthdays & Anniversaries
- Any Special Occasion
- Tick your Bucket List
- Personal & Boutique experience
- Owner / Chief Pilot 30 years flying
- Exclusive Groups & Regional Charter



[www.floatingimages.com.au](http://www.floatingimages.com.au)



KALBAR AND SURROUNDS

## Flowers, Farms & Camels

1 hour 15 minutes drive time / 83km



Summer Land Camels

This itinerary is full of moments that you'll talk about for years to come. Whether you're floating peacefully over a patchwork of tiny paddocks, indulging in delicious farm gate stops, walking through fields of sunflowers or riding camel back, you'll make memories in Kalbar and its neighbouring villages.

We begin by stepping into a hot air balloon basket in the early hours of the morning. As you lift off, a sense of adventure hints at the exciting day to come. After spending the morning among the clouds, we journey just outside of Harrisville to Summer Land Camels. This camel farm offers a chance to learn about the history of camels in Australia and the process of producing the farm's award-winning camel milk, cheeses, gelato, skincare and the world's first vodka made from camel milk whey and honey.

Awaken your inner explorer by taking a camel ride during an unforgettable Scenic Rim sunset or through the beautiful gardens before fuelling up at the Homestead Café.

Only eight minutes south of your camel adventure, you'll find a mushroom farm born from a family tradition of picking mushrooms after the rainfall. Open from 10am to 4pm every Saturday, Scenic Rim Mushrooms showcases how to farm boutique Australian mushrooms and transform them into products such as elixirs. This farm gate stop is dog-friendly.

Just a little further down the road we move from delicious things to eat to delicious scents to pamper your skin. Welcome to Coco and Myrtle. Founder, Gemma is an animal-loving, garden-growing, hard-working woman who makes skin, hair, bath and home products using the produce of farmers she finds around her.

Make an appointment to tour the operation and visit the farm gate shop to indulge in hand-crafted Coochin Spicy Pumpkin soap or a bath fizzer.

From here there are two roads to Kalbar. One takes you past the beautiful Queenslander style architecture of Harrisville's main street, through Milora and Kents Lagoon. If you're seeking farm accommodation with style, turn off at Munbilla and head to the 100-year-old Lumière Farmhouse. It's beautifully designed and set on rolling hills with old fashioned fun in its heart.

The other route to Kalbar takes you through Warrill View and offers easy access to a cosy country cottage should you wish to stay in the area.





There's romance in the air at one of the region's most luxurious and romantic accommodation options, just minutes away. Herrmann House is designed with crisp whites, rich blacks and decadent fabrics.

Located on the site of one of Kalbar's oldest houses, Herrmann House offers an old-world sense of romance. A broad balcony opens to views of sprawling farmland and stunning gardens. Little touches of luxury throughout the house will have you wanting to stay forever.

The Scenic Rim View Cottages is an award-winning, Bed and Breakfast style accommodation. Substantial breakfast hampers can be enjoyed on the large verandah overlooking the Great Dividing Range.

Kalbar itself is located in the Fassifern Valley. It has a rich German history with many German immigrants settling in the village to farm the fertile soil in the 1870s. Many ancestors of those settlers still live and work the area today.



**This proud history is evident in many of the town's buildings, each with its own unique story.**

Just four minutes south of Kalbar, it's time to stop and smell the flowers, quite literally. Scenic Rim Flower Farm grows fields of edible meadow flowers.

Time your visit right for a planned event or the Sunflower Festival and watch the farm come alive with yoga among the blooms, a flower maze, sip and paint classes, photo sessions and entertainment for the kids.



## Relax & enjoy a night of beautiful country style & indulgence

Located in the cute historic town of Kalbar, sits an elegant 4.5 star homestead that offers you a luxurious overnight stay.  
For bookings call 0478 767 046  
or email [info@herrmannhouse.com.au](mailto:info@herrmannhouse.com.au)



## Take the Scenic Rim home

It's easy to fall in love with the delicious flavours of the region and the simple beauty of the country living aesthetic. It's even easier to take a little of the Scenic Rim home with you.

### Scenic Rim Farm Box

The Scenic Rim Farm Box offers consumers the chance to have local produce and products delivered directly to your door. Design your own box or leave it to the professionals, you could be indulging in grain fed rib fillet, prepared meals, fresh vegetables and herbs, chutneys and jams, sweets and gelato, as well as coffee, beers, wine and cheese.

Get a taste for what's on offer while visiting the Scenic Rim Farm Shop and Café that serves local coffee and food surrounded by the working Elderflower Farm. Don't forget to drop into Elderflower Farm's garden shop for fresh cut flowers before you leave.



## Experience the Wonder of Australia's Largest Camel Dairy



MEET & FEED OUR FRIENDLY CAMELS



LICENSED CAFE



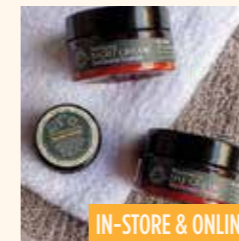
FARM TOURS & CAMEL RIDES



CAMEL MILK GELATO



AWARD-WINNING CAMEL MILK CHEESES



THERAPEUTIC CAMEL MILK SKINCARE



AWARD-WINNING CAMEL MILK VODKA



AWARD-WINNING CAMEL MILK POWDER

**FREE ENTRY • OPEN 9AM TO 3PM EVERY DAY\* • JUST 45 MINS FROM BRISBANE**

\*EXCEPT SOME PUBLIC HOLIDAYS

[SUMMERLANDCAMELS.COM.AU](http://SUMMERLANDCAMELS.COM.AU)

8 CHARLES CHAUVEL DRIVE, HARRISVILLE



Featured by Lonely Planet



Recognised as one of the top 10% attractions worldwide



27 MEDALS Sydney Royal Show



11 MEDALS Royal QLD Food & Wine Show

# FARM GAT3

FABULOUSNESS



Towri Sheep Cheese

With knowledge passed down through generations, the Scenic Rim is a widely-celebrated Australian farming region. In fact, the Scenic Rim officially won the 'Outstanding Region' trophy in the prestigious Delicious Awards in 2020.

This itinerary offers a real opportunity to connect with this land and the people who know it best. Throughout the region loving hands nurture animals, grow produce and conjure the highest quality, artisan made products. Each farm gate stop is an opportunity to meet the dedicated farmers and learn about the day-to-day intricacies of keeping their animals safe and happy, soils healthy and crops growing.

Our itinerary moves from the north to south, and groups stops in different regions, making it easy to plan your own farm gate adventure.

However you choose to explore them, you'll find history, dedication, innovation and a true affinity for the land that creates such bounty. More importantly, you'll have the opportunity to support these farmers in a very tangible and meaningful way, by filling your esky with deliciousness!

FARM GATE

## Country Charm and Life on the Land



Elderflower Farm & Scenic Rim Farm Shop



### MADE BY THE FARMERS, ON THE FARM

JERSEY GIRL ARTISAN DAIRY PRODUCTS · ETHICALLY RAISED ROSE VEAL MILK FED, FREE RANGE, HERITAGE BREED PORK · FREE RANGE, PASTURED EGGS

On our 6<sup>th</sup> generation dairy farm, we are committed to respecting traditions of the past, whilst embracing regenerative agriculture practices to build the health of our soil, our animals, and our customers. We take pleasure in providing bespoke farming experiences and creating outstanding products – we love what we do, and our products represent our passion.

[TOMMERUPSDAIRYFARM.COM.AU](http://TOMMERUPSDAIRYFARM.COM.AU)  

Phone Dave 0412 727 742 or Kay 0400 076 556 to pre-arrange a visit to our farm – no drop in visits.





## Kalbar and Surrounds

### SUMMER LAND CAMELS

Farm Tours and Camel Rides can be booked online.

An hour south west of Brisbane or 30 minutes from Boonah, Summer Land Camels produces award-winning camel milk cheese, gelato and a range of skincare. The camel farm offers a wide range of activities. Tours help you learn the story of camels in Australia's history, understand the process of milking and producing camel milk products. and get up close and personal with the stars of the show, the camels.

Feed the camels at the paddock fence or step into the shoes of early explorers and take a camel ride. Feel the rhythmic gait of your camel and survey a Scenic Rim sunset from the saddle. Support the locals and take home some goodies!

### SCENIC RIM FARM SHOP AND CAFÉ

Open Friday to Sunday, 8:30am to 4pm.

The Scenic Rim Farm Shop and Café is nestled under towering 120-year-old Jacarandas and surrounded by working farms. Enjoy exceptional local coffee and fresh flavour-filled local food prepared by regional food ambassador Kate Raymont. Shop a range of fresh local produce and speciality items.

### ELDERFLOWER FARM

Open Friday to Sunday, 8:30am to 4pm.

This boutique flower farm grows fields of old-fashioned heirloom blooms that owner and florist Rachel transforms into custom bouquets and arrangements. Pick up a bouquet from the rustic shop, or watch

out for regular workshops for the chance to pick a bucket of blooms and transform them for yourself.

### SCENIC RIM MUSHROOMS

Open Saturday 10am to 4pm, tour groups by appointment.

Get lost in the incredible lion's mane, count the spots on the mated freckled chestnuts or simply gaze at the beauty of the pretty in pink. Visit Scenic Rim Mushrooms and learn just how complex and beautiful the world of boutique mushrooms can be. For Matt, growing mushrooms is about growing health.

Learn how a focus on quality and freshness means better taste and more nutritional value, marvel at the mushroom nursery and hear stories of Matt hunting for mushrooms on the farm with his father after it rained. That's one tradition that lives on at Scenic Rim Mushrooms.

### SCENIC RIM FLOWER FARM

Open for visits via appointment or during an event. Check the website for ticket sales.

Vincent Van Gogh found comfort in contemplating sunflowers. You'll gain a whole new understanding of this sentiment as you walk through fields of towering sunflowers. Or perhaps you prefer the delicate simplicity of the meadow flowers. Wander through rows of colourful blooms and hundreds of butterflies. This farm gate stop is picture perfect.

Get hands on and pick your own bouquet or watch out for other events such as a sip and paint class, yoga among the petals or even the Sunflower Festival in March.

## Beaudesert and Surrounds

### TOWRI SHEEP CHEESES

Open on the first Saturday of each month from 10am to 2pm. Farm Tour and demonstration starts at 10am.

Cuddle their friendly sheep, create your own sheep cheese platter paired with local produce from the Towri farm shop to be enjoyed in their French style garden. They look forward to seeing ewe soon.



### BEE ALL NATURAL

By appointment only.

The next stop is as sweet as the story behind this honey brand's creation. The Roebig family wanted to pass on the age-old techniques from generations of beekeepers before them. They use natural and organic methods to harvest the highest quality honey and create products without any nasty toxins.



## The Lost World

### TOMMERUP'S DAIRY FARM

Farm Larder open by appointment only or attend a planned event.

This sixth-generation family farm is home to the Tommerup family. The Jersey Girls, as the family fondly refers to their herd of 20 milking cows, produce the rich and creamy milk that is lovingly crafted into award-winning dairy products. Visit the Tommerup's Farm Larder where you'll be greeted by a rustic country farm shop, and the farmers themselves. Their creamy Jersey Girl ice creams are the perfect treat to enjoy in the farm picnic paddock.

### WHITE'S FARM

Though the farm originally started as a dairy, it's now home to expertly grown vegetables and golden delicious farm honey. Stop by their quaint roadside stall, complete with honesty box, where you'll find seasonal produce including pumpkins, watermelons, avocados, and fresh honey.



## the SCENIC RIM FARM SHOP

Open Friday to Sunday  
8.30am to 4pm.

541 Kents Lagoon Road, Kalbar

[scenicrimfarmshop.com.au](http://scenicrimfarmshop.com.au)

Local Produce • Coffee & Cake • Breakfast • Lunch • Events  
Home to Elderflower Farm Garden Shop & Flower Field.



OPENING HOURS SATURDAY 10AM-4PM



BRING THE ESKY AND HAVE A FARM TOUR WITH US

OUR MUSHROOMS ARE THE HIGHEST QUALITY, FRESHEST CULINARY AND MEDICINAL MUSHROOMS AVAILABLE. FARM GATE SALES. OUR FARM STORE FEATURES PRODUCTS FROM LOCAL AUSTRALIAN ARTISTS AND PRODUCERS. TOURS BY APPOINTMENT.

[WWW.SCENICRIMMUSHROOMS.COM.AU](http://WWW.SCENICRIMMUSHROOMS.COM.AU) • 0422 793 749 • 13 CHURCH STREET, HARRISVILLE

@SCENIC\_RIM\_MUSHROOMS  

## ----- Canungra, Beechmont and Surrounds -----



### PRETTY PRODUCE

Attend a farm event.

Flower farm owners and innovators Simone and Dave believe that there is a fine line between passion and madness and that they have both. From brightly coloured flowers, the pair produce fresh and dried edible flowers. The award-winning products are in demand locally and nationally.

Attend one of the unique and routine Pretty Produce events to find yourself in heavenly fields of flowers, a space to slow down and connect with the landscape around you.

### MOUNTVIEW ALPACA FARM

Open Monday to Friday from 10am to 3pm.

Open Saturday and Sunday from 9.30am to 4pm.

A farm within a vineyard, Mountview is home to Jen, Steve and their more than 70 alpacas. Together they train a select few alpacas as therapy animals that visit hospitals and aged care facilities and plan unforgettable moments for you to interact with these amazing animals. Choose a meet an alpaca experience or combine a dining and interaction experience. Don't forget to visit the Gift Store for all things alpaca.



## ----- Rathdowney, Barney and Surrounds -----

### RUNNING CREEK BEEF

Open by appointment for planned events and farm-gate beef sales.

Second generation grazier's Rod and Debbie Richardson invite you to experience Running Creek Beef and their 670-acre beautiful farm in Running Creek just out of Rathdowney. Breeding their rare-breed Sahiwal cattle, they specialise in true grass-fed beef. True paddock-to-plate shopping is available at the Farm Pantry and Tractor Shed Porch with a backdrop of the MacPherson Ranges and the farm's spectacular mountains.



### TOP TIPS TO EXECUTE A FARM GATE STOP LIKE A PRO

The most important thing to remember is that each of these stops is a real-life working farm.

1. Always respect the opening times or booking system of the farm. Please don't arrive unannounced.
2. Please don't bring pets. Working farms often have bio-restrictions that dictate what the producers can and can't do.
3. Please wear closed-in shoes.
4. Always wash your hands after touching any animals.
5. Please note that the estimated itinerary time is drive time only. Try to allow yourself enough time to enjoy each stop and meet the producers.
6. Most importantly, remember your empty Esky! An essential for any farm gate journey.





## Bee All Natural

STRAIGHT FROM THE BEEKEEPER

**Raw honey • Honeycomb • Creamed honey • Fruit and spice infused creamed honey • All-natural bath, body and beauty product range**

**BEE-A-BEEKEEPER EXPERIENCE** for ages 7+. Get up close and personal in a bee suit with the world's most important insect and learn how honey is made, the workings of a beehive and why bees are so important. **Bookings essential.**  
Email: [info@beeallnatural.com.au](mailto:info@beeallnatural.com.au)

**Farm Gate open by appointment call 0412 850 065 to book**  
**313-317 Bushman Drive, Jimboomba**  
Facebook: [@beeallnatural](#)  
Instagram: [@beeallnaturalau](#)

Find out more and **shop online** at [beeallnatural.com.au](http://beeallnatural.com.au)

A wide range of artisan handmade products made and produced onsite

#eatqld  
Old Boutique Honey Industry Ambassadors



## Running Creek

— BEEF —

Buy farm-fresh grass-fed beef and holiday at Running Creek Beef and Running Creek Cottage Farmstay.

- Farm gate sales from our Farm Pantry of Running Creek Beef, pies and other local produce (by appointment and at events)
- Stay at Running Creek Cottage, a beautifully renovated, 100-year-old cottage, fully self-contained, sleeps 6

**BOOK YOUR VISIT OR ACCOMMODATION AT**  
**WWW.RUNNINGCREEKBEEF.COM.AU**

30 MINUTES FROM BEAUDESERT, 90 MINUTES FROM GOLD COAST & BRISBANE



# SCENIC SIP5



Spicers Scenic Rim Trail

## Wine, Spirits and a Craft Beer



The unmistakable old-world romance of the sunlight streaming through the vineyard, the flavours that make your eyebrows rise and the cold brews that inspire long afternoons of story-telling - this is the scenic sips itinerary.

Deliciousness is partly grown and partly made. It takes ingredients of an exceptional quality, creative minds and talented hands. You'll feel the dedication to the minute intricacies applied throughout the creation process. And you'll hear the passion in the voices of our head chefs, master brewers and wine makers.



Kooroomba Vineyards

### O'REILLY'S CANUNGRA VALLEY VINEYARDS

'Celebrate the simple pleasures of life' at O'Reilly's Canungra Valley Vineyards - just 40 minutes from the Gold Coast and 90 minutes from Brisbane.

What better way to unwind with family or friends than enjoying a delicious picnic underneath the silky oak trees, right by the bubbling Canungra Creek.

Explore 8 acres of picturesque vines and lawns, then wander the halls of the 164 year old homestead 'Killowen'. Be sure to visit our Cellar Door and discover award winning O'Reilly's wines produced from estate grown grapes.

LIVE MUSIC EVERY WEEKEND • OPEN 10AM - 4PM EVERYDAY

O'Reilly's

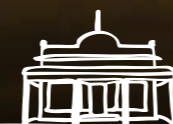
CANUNGRA VALLEY VINEYARDS

[www.oreillys.com.au/cvv](http://www.oreillys.com.au/cvv) (07) 5543 4011

852 Lamington National Park Rd, Canungra @canungravalleyvineyards



All natural & brewed onsite



[www.scenicrimbrewery.com.au](http://www.scenicrimbrewery.com.au)

You will not be left empty-handed after visiting this rural paradise, speckled with breweries, wineries and distilleries right across the region. Whether you enjoy a true-blue Aussie beer or something a little sweet and flirty, you'll be spoilt for choice at these renowned sip locations.



### TAMBORINE MOUNTAIN DISTILLERY

Open 7 days from 10am to 5pm

Owners Gordon and Shumei respect Tamborine Mountain Distillery's traditional European recipes, adding in a good dollop of their own ambitious expansion plans from their new and much bigger location at Macdonnell Road.

You'll taste a unique character with every drink, which is no doubt why Tamborine Mountain Distillery is Australia's most awarded distillery and liqueur brand this century.

Will your favourite sip be Turkish Delight Liqueur, the Moulin Rooz Absinthe or the Wattle Toffee Liqueur? Tour the working distillery, take in the scenery and taste the spirit of Tamborine Mountain.

### CAULDRON DISTILLERY

Open 12noon to 5pm Wednesday and Thursday

Open 12noon to 7pm Friday

Open 10am to 7pm Saturday

Open 10am to 7pm Sunday

Set on an 18-acre property among vineyards and lush green meadows, the Cauldron Distillery creates unique Queensland inspired beverages in a photo-worthy setting.

Order one of the famous gin paddles that comes with recommended garnish and artisan mixers. It's a great way to taste the award winning Five to Five Gin range including the Coastal Navy Strength Gin, Five to Five Sunset Gin, Mountain Gin and Limited Release True Blue Gin.

Or dip your brush in the paint pot and test out your talent at a Sip n' Paint session. Get even more hands-on with the gin process in upcoming gin making classes.

### CEDAR CREEK ESTATE VINEYARD AND WINERY

Open 10am to 3pm weekdays

Open 10am to 4pm weekends

You won't just find a cellar door at the end of this tree-lined driveway. You'll find the Queensland Wine Centre.

Here you'll learn how to connect your taste and smell senses to food and wine and have the chance to taste the largest range of wines in the hinterland. Soak in new knowledge and catch the contagious passion of the Cedar Creek Estate crew.

Outside the Wine Centre, the restaurant is a relaxing place and begs you to slow down. You can peruse Australian scenes in the Arthur Hamblin Gallery or take one of the daily tours to the Glow Worm Cave.

### WITCHES FALLS WINERY

Open Monday to Thursday 10am to 4pm

Open Friday 10am to 7pm

Open Saturday 10am to 6pm

Open Sunday 10am to 5pm

One of Queensland's largest wine producers, Witches Falls Winery is the passion of Jon and Kim Heslep. Chief Winemaker Jon brings exceptional skills and a wealth of experience.

Coupled with having one of the highest altitudes in the country, Witches Falls Winery is a sweeping vineyard, with a well-stocked larder full of local delicacies.

Red, white, pink, wildly fermented or something perfectly paired with dessert, your Witches Falls Winery tasting journey could take you anywhere.

### O'REILLY'S CANUNGRA VALLEY VINEYARDS

Open daily from 10am to 4pm

This stunning vineyard stretches along the banks of Canungra Creek creating perfect settings for tasting famous artisan wines.

Discover the delicate whiffs of nashi fruit in the zingy Groom Pinot Gris or the full-bodied aromas of mint and dark berries in the Viola Cabernet Sauvignon Reserve.

Picnic baskets and stone-baked pizzas are served from the 163-year-old historic 'Killowen' homestead.

Combine delicious food and smooth sips with regular live music from local musicians, and don't forget to visit the onsite Mountview Alpaca Farm.

### THE OVERFLOW ESTATE 1895

Open Wednesday to Friday from 11am to 2pm

Open Saturday and Sunday from 10am to 4pm

Bookings essential

Your next stop is a stunning location, like an island wrapped in a beautiful lake. A historic grazing property turned winery, The Overflow Estate 1895 is a boutique viticultural operation.

The concept of the tasting room evolved into a beautiful architectural structure with incredible atmosphere where the Usher and Morgan families offer tastes of their hard work with stunning views.

Taste the Sardinian roots and aromas of lemongrass in the Vermentino or the strength of the mighty central Italian grape in the Montepulciano. Enjoy them with the French chef's crispy slow cooked pork belly or famous sand crab lasagne.

### BUNJURGEN ESTATE VINEYARD AND WINERY

Open Friday, Saturday and Sunday. Bookings essential.

This stop tastes like finely textured berries and plums and has a medium purple colour with just a hint of ruby. And that's just one of the drops - Bunjurgren's Teviot Red Shiraz.

Sip wine outside the cellar door under the purple blooms of the jacaranda tree or inside the cool and calm of the cellar at the bar.

If the wine and stunning scenery inspires you so, take a seat at the piano stool and tickle the ivories of the 1929 vintage pianola.

### KOOROOMBA VINEYARDS AND LAVENDER FARM

Open Wednesday through Sunday from 10am

Private functions can cause closures. Please check the website before visiting.

Walk through a sea of purple flowers, the air scented with lavender to a sip stop with so much to offer.

Take photos by the stunning chapel, peruse the Lavender Gift Shop for cosmetics and homemade jams and honey. Unwind to the sweet sounds of live music on the terrace every Sunday. And we haven't even mentioned the Cellar Door yet.

There's the easy-drinking Kooroomba Rosa that leaves you with a lingering sweetness or the tropical fruit taste combined with light oak in the Kooroomba Chardonnay. Sip them with Chef Daniel Groneberg's perfectly cooked lamb or beautifully plated rabbit.

### SCENIC RIM BREWERY

Open Thursday to Sunday from 10am to 5pm

The location of this craft brewery in the tiny town of Mount Alford is important. In fact, you'll taste it in every one of Master Brewer Mike's creations or Wendy's Dutch-inspired bitterballen or gourmet hotdogs.

That's because Scenic Rim Brewery's thirst-quenching brews are each made to pay homage to local history, characters and the stories of Mt Alford.

Take a tour with Mike and learn about the process from the master, before tasting the roasted malt and chocolate of Giddy Gout Milk Stout or the spicy nostalgic flavour of the Digga's Pale Ale.



# Scenic Rim Accredited Information Centres



Scenic Rim Tourist Information Centres are manned by passionate local characters with an exhaustive knowledge of their very special part of the world. Let them help you plan the Scenic Rim drive holiday that suits you best.

## Beaudesert

Dick Westerman Park, Cnr Mt Lindesay Highway and Enterprise Drive  
Beaudesert 4285  
**Phone:** 07 5541 4495  
**Fax:** 07 5541 0381  
**Email:** [bdstarts@bigpond.net.au](mailto:bdstarts@bigpond.net.au)  
**Open:** Monday – Friday 9am – 4pm  
Saturday – Sunday 9am – 3pm  
Closed Good Friday, Christmas and Boxing Day.

## Boonah

Bicentennial Park  
20 Boonah-Fassifern Road  
Boonah 4310  
**Phone:** 07 5463 2233  
**Email:** [boonahvic@gmail.com](mailto:boonahvic@gmail.com)  
**Open:** daily 9:30am – 4pm  
Closed Christmas Day, Good Friday and Anzac Day morning

## Canungra

12-14 Kidston Street  
Canungra 4275  
**Phone:** 07 5543 5156  
**Email:** [canungrainformation@bigpond.com](mailto:canungrainformation@bigpond.com)  
**Open:** daily 8:30am – 3pm

## Rathdowney

82 Mt Lindesay Highway  
Rathdowney 4287  
**Phone:** 07 5544 1222  
**Fax:** 07 5544 1443  
**Email:** [info@rathdowney.org.au](mailto:info@rathdowney.org.au)  
**Open:** 9am – 3pm Monday to Friday  
9am – 4pm weekends

## Tamborine Mountain

Doughty Park, 2 Main Western Road  
North Tamborine 4272  
**Phone:** 07 5545 3200  
**Email:** [tmvic@bigpond.com.au](mailto:tmvic@bigpond.com.au)  
**Open:** daily 9:30am – 3:30pm



# Escape

in the Scenic Rim

29 April - 29 May 2022

A month long festival with adventure + nature + eco encounters for all ages, interests and budgets.

A program bursting with transformational experiences that will provide deeper, more meaningful and engaging experiences that will 'feed the mind, activate the body and lift the heart.'

[www.escapeinthescenicrim.com.au](http://www.escapeinthescenicrim.com.au)



**SCENIC RIM**  
REGIONAL COUNCIL

# Farm Gate Trail

COME AND EXPERIENCE COUNTRY LIFE IN THE SCENIC RIM!

FRESH LOCAL PRODUCE • ANIMAL EXPERIENCES  
MEET THE PRODUCERS • EXPLORE THE FARMS  
BEVERAGE TASTINGS • AND MUCH MORE

*Learn where your food comes from, meet the farmers, shop local and fill your empty esky with our delicious local produce.*



Check out the experiences and plan your road trip here



Regular updates via social media or [www.destinationscenicrim.com](http://www.destinationscenicrim.com)



# SCENIC EV3NTS

With so much to celebrate and so many passionate locals ready to pull up the curtain, Scenic Rim events are worth planning your trip around.

Stages are spread throughout the Scenic Rim, among World Heritage listed forests, on sprawling farms and in purpose-built arenas.

## APRIL

### Escape in the Scenic Rim

Set in some of the most spectacular natural surrounds in the world, Escape in the Scenic Rim will feature natural beauty, abundant wildlife and incredible local produce.

## JUNE

### Scenic Rim Eat Local Week

This delicious event is a symphony of long lunches, dreamy dinners, farm gates, workshops and the family-fun Winter Harvest Festival.

### Scenic Rim Clydesdale Spectacular

This event celebrates the gentle giants of the horse world. See the champions of the breed, soak up the skilled trade of harness making, whip plaiting, the Queensland Whip Cracking Champions, working dog displays and more.

## JULY

### Scenic Rim Winter Harvest Festival

A relaxed day out that takes a country market atmosphere to carnival level. Taste the food, meet the producers, watch the cooking demonstrations and feast your eyes on this signature food festival.

### Evergreen Festival

Celebrate local food and fine craftsmanship in an atmosphere that is alive with the promise of a party. Picture perfect settings, festooned market stalls featuring everything from edible treats to handmade ornaments, mulled wine and so much more.

### Scenic Rim Farm Gate Trail

Experience a taste of country life, producer passion and fill your Esky with hand-made, gourmet goodies on this incredible exploration of farm gate stops.

## AUGUST

### Scenic Rim Ultra

One of the most hardcore, gruelling and spectacular runs in Australia, the Ultra includes mountain climbs, relentless ridgelines and technical downhill runs.

### True Grit Obstacle Challenge

Challenge yourself when this military inspired obstacle course comes to Kooralbyn. Put your perseverance and stamina to the test, with 5km and 10km course options.

Please note that all dates pertain to the year 2022 and may be subject to change. Please check the individual event websites when planning your trip.



Scenic Rim

**CLYDESDALE SPECTACULAR**  
& FASSIFERN HIGHLAND GATHERING

BOOK TICKETS HERE



- CLYDESDALES & HEAVY HORSES
- WORKING DOGS
- SCOTTISH PIPE & DRUM BANDS
- BLACKSMITHING & WHEELWRIGHT DEMONSTRATIONS
- WOODCHOP
- AUSTRALIAN LIGHT HORSE
- BILLY BOILING WORLD CHAMPIONSHIP
- QUEENSLAND WHIP CRACKING CHAMPIONSHIPS
- FRIESIAN PERFORMANCE TROUPE
- PLUS ENJOY THE BOONAH PIE CART, CARRIAGE RIDES AND CABER TOSS

**11TH & 12TH JUNE 2022, BOONAH SHOWGROUNDS**

1300 259 343 [f@CLYDIESPECTACULAR](#) [WWW.CLYDESDALESPECTACULAR.COM.AU](http://WWW.CLYDESDALESPECTACULAR.COM.AU)



# DIRECTORY

Business Name	Address	Phone	Website
<b>KALBAR, ROADVALE, HARRISVILLE, PEAK CROSSING AND ROSEVALE</b>			
Grace Your Space	Woolooman Rd, Woolooman QLD 4310	0416 265 836	www.graceyourspace.com.au
Scenic Rim Farm Box & Scenic Rim Farm Shop	541 Kents Lagoon Rd, Kents Lagoon QLD 4309	0429 452 637	www.scenicrimfarmbox.com.au
Scenic Rim Flower Farm	56 Warumkarie Rd, Kalbar QLD 4309	0418 736 588	www.scenicrimflowerfarm.com.au
Herrmann House	37 George St, Kalbar QLD 4309	0478 767 046	www.herrmannhouse.com.au
Scenic Rim Mushrooms	13 Church St, Harrisville QLD 4307	0422 793 749	www.scenicrimmushrooms.com.au
Summer Land Camels	8 Charles Chauvel Dr, Harrisville QLD 4307	(07) 5467 1707	www.summerlandcamels.com.au
Coco and Myrtle	713 Warrill View Peak Crossing Rd, Harrisville QLD 4307	0417 548 873	www.cocoandmyrtle.com
Scenic Rim View Cottages	357 Old Rosevale Rd, Warrill View QLD 4307	(07) 5464 6508	www.scenicrimviewcottages.com.au
Elderflower Farm	5657 Ganthorpe Rd, Cochin QLD 4310	0427 345 528	www.elderflowerfarm.com.au
The Grove Cottage	58 Kulgun Rd, Boonah QLD 4309	0448 168 817	grovecottageboonah.com.au
Skyline Farm House	303 Zahnows Rd, Rosevale QLD 4340	0488 110 143	skylinefarmhouse.com
White Chapel Kalbar	87 George St, Kalbar QLD 4309	0478 767 046	whitechapelkalbar.com.au

## BOONAH, ARATULA, LAKE MAROON AND LAKE MOGERAH

Australian Hotel	32 High St, Boonah QLD 4310	(07) 5463 1444	www.australianhotelboonah.com.au
Dugandan Hotel	124 Boonah Rathdowney Rd, Boonah QLD 4310	(07) 5463 1048	www.dugandanhotel.com.au
Drayhorse Shires	2560 Boonah Rathdowney Rd, Maroon QLD 4310	0476 199 826	www.drayhorseshires.com
Boonah Golf Club	Bruckner Hill Rd, Dugandan QLD 4310	(07) 5463 1470	www.boonahgolfclub.com.au
Horizon Guides	7 Church St, Boonah QLD 4310	(07) 5463 4114	horizonguides.com.au
Ketchups Bank Glamping	726 Green Hills Rd, Cannon Creek QLD 4310	(07) 5463 4592	www.ketchupsbankglamping.com.au
Scenic Rim Cooking Classes	22 Mountview Cl, Boonah QLD 4310	0408 199 736	www.scenicrimcookingclasses.com.au
Hummingbirds Natural Pantry and café	Shop 4/2 Railway St, Boonah QLD 4310	(07) 5463 2878	www.hummingbirds.net.au
Local Taste Discoveries	Milford Rd, Boonah QLD 4310	0409 857 639	www.localtastediscoveries.com.au
Maynards Store	48 High St, Boonah QLD 4310	(07) 5463 1526	
Milford Country Cottages	268 Evans Rd, Milford QLD 4310	0434 621 902	www.milfordcottages.com.au
Old Church B&B	438 Milford Rd, Milford QLD 4310	0415 119 817	www.oldchurchbnb.com.au
Christelle Moller Wedding Celebrant	438 Milford Rd, Milford QLD 4310	0409 857 639	www.christellemarriagecelebrant.com.au
Scenic Rim Clydesdale Spectacular	8 Melbourne St, Boonah QLD 4310	1300 259 343	www.clydesdalespectacular.com.au
Queensland Moto Park	110 Goan Rd, Coulson QLD 4310	(07) 5463 5015	www.qldmotopark.com.au
Scenic Rim Motel Aratula Village	6757 Cunningham Hwy, Aratula QLD 4309	(07) 5463 8161	www.aratulavillage.com.au
Spicers Scenic Rim Trail	7791 Cunningham Hwy, Clumber QLD 4309	13 77 42	www.spicersretreats.com/scenic-rim-trail
Hanoob Views	2278 Carneys Creek Rd, Carneys Creek QLD 4310	0438 193 649	www.hanoobviews.com
Wander at The Overflow 1895	1660 Beaudesert Boonah Rd, Wyaralong QLD 4310	(02) 9055 7747	www.wander.com.au/scenicrim
Mount Alford Lodge	1269 Mount Alford Rd, Mount Alford QLD 4310	(07) 5463 0999	www.mountalfordlodge.com.au
Scenic Rim Brewery	898 Reckumpilla St, Mount Alford QLD 4310	(07) 5463 0412	www.scenicrimbrewery.com.au
Vanbery Cottage Host Farm	503 Ganthorpe Rd, Mount Alford QLD 4310	0409 646 280	www.vanberycottage.com.au
Bunjurgan Estate Vineyard	121 Brent Rd, Bunjurgan QLD 4310	0417 638 736	www.bunjurgan-estate-vineyardwinery-boonah.business.site
Kooroomba Vineyard & Lavender Farm	168 F M Bells Rd, Mount Alford QLD 4310	(07) 5463 0022	www.kooroomba.com.au
Boonah Motel	1 Mount Carmel Rd, Boonah QLD 4310	(07) 5463 1944	www.boonahmotel.com
Hilly Ridge	Cannon Creek QLD 4310	0405 738 767	www.airbnb.com.au/rooms/20039233
Mount French Lodge	39 Lutter Rd Charlwood QLD 4309	0439 221 495	www.mountfrenchlodge.com.au
Sugarloaf Bakery	384 Milford Rd, Milford QLD 4310	0418 790 326	
The Outlook	PO Box 226, Boonah QLD 4310	(07) 5463 1900	
The Vue Restaurant	3908 Ipswich-Boonah Rd, Boonah QLD 4310	(07) 5463 4738	www.thevuerestaurant.com.au

Business Name	Address	Phone	Website
<b>RATHDOWNEY, MT BARNEY AND SURROUNDS</b>			
Scenic Rim Adventure Park	636 Tamrookum Creek Rd, Tamrookum Creek QLD 4285	0438 766 697	www.scenicrimadventurepark.com.au
Oaky Creek Farm	208 Oaky Creek Rd, Oaky Creek QLD 4285	0459 818 794	www.oakycreekfarm.com.au
Running Creek Beef	1464 Running Creek Rd, Running Creek QLD 4287	0448 844 455	www.runningcreekbeef.com.au
Araucaria Ecotours	1770 Running Creek Rd, Rathdowney QLD 4287	(07) 5544 1283	www.learnaboutwildlife.com
Barney Creek Vineyard Cottages	198 Seidensspinner Rd, Mount Barney, QLD 4287		barneycreekcottages.com
Mt Barney Lodge	1093 Upper Logan Rd, Mount Barney QLD 4287	(07) 5544 3233	www.mtbarneylodge.com.au
Tuckeroo Cottages & Gardens	115 Forest Home Road, Rathdowney, Qld 4287	(07) 5463 6263	www.tuckerocottages.com.au

## BEAUDESERT, KOORALBYN AND SURROUNDS

Scenic Rim Regional Council	82 Brisbane St, Beaudesert QLD 4285	(07) 5540 5111	www.scenicrim.qld.gov.au
Bee All Natural	313 Bushman Dr, Jimboomba QLD 4280	0412 850 065	www.beeallnatural.com.au
Towri Sheep Cheeses	206 Saville Rd, Allenview QLD 4285	0403 463 429	www.towrisheepcheeses.com.au
Yalbaroo Scenic Rim Retreat	772 Cainbale Creek Rd, Cainbale QLD 4285	0413 181 168	www.yalbaroo.com.au
Floating Images Hot Air Balloon Flights	259 Junction Rd, Karalee QLD 4306	(07) 3294 8770	www.floatingimages.com.au
Moongalba Cottage	603 Cainbale Creek Rd, Cainbale QLD 4285	0421 385 061	www.moongalbacottage.com.au
The Old Laravale School	77 Christmas Creek Rd, Laravale QLD 4285	0402 309 047	www.theoldlaravaleschool.com
The Overflow Estate 1895	1660 Beaudesert Boonah Rd, Wyaralong QLD 4285	0455 221 895	www.theoverflowestate1895.com.au
Beaudesert Caravan & Tourist Park	57-63 Albert St, Beaudesert QLD 4285	(07) 5541 1368	beaudesertcaravanpark.com.au
Beaudesert Show Society	41-53 Albert St, Beaudesert QLD 4285	(07) 5541 3200	www.beaudesertshow.org.au
Murphys Country Accommodation	94 Tamrookum Church Rd, Tamrookum QLD 4285	0438 736 832	murphyscottage.com.au
The Copperhead Cafe	290-296 Wellington Bundock Dr, Kooralbyn QLD 4285	(07) 5544 6112	www.thecopperheadcafe.com
Our Little Shop	13A William St, Beaudesert QLD 4285	0456 721 643	

## THE LOST WORLD

Cedar Glen Farmstay	3338 Kerry Rd, Darlington QLD 4285	(07) 5544 8170	www.cedarglen.com.au
Worendo Cottages	97 Cedar Glen Rd, Darlington QLD 4285	0422 587 567	www.worendo.com
Eighteen Mile Accommodation	3112 Kerry Rd, Darlington QLD 4285	0419 688 529	www.eighteenmile.com
The Farm at Duck Creek	Lot 101 Duck Creek Road, Kerry QLD 4285	0407 177 591	www.thefarmatduckcreek.com
Kerry Valley Secret	Kerry Valley QLD 4285	0477 240 230	www.kerryvalleysecret.com.au
Tommerup's Dairy Farm	2142 Kerry Rd, Kerry QLD 4285	0400 076 556	www.tommerupsdairyfarm.com.au
Stay at Kirro	2614 Kerry Rd, Darlington QLD 4285	0418 886 783	www.stayatkirro.com.au
White Family Farm (A & JA White)	2028 Kerry Rd, Kerry QLD 4285	0427 027 501	

## TAMBORINE MOUNTAIN REGION

Cedar Creek Estate	104-144 Hartley Rd, Tamborine Mountain QLD 4272	(07) 5545 1666	www.cedarcreekestate.com.au
Cedar Creek Lodges & Thunderbird Park	Tamborine Mountain Rd & Cedar Creek Falls Rd Tamborine Mountain QLD 4272	(07) 5545 7900	www.cedarcreeklodges.com.au
Tamborine Mountain Distillery	10 MacDonnell Rd, Tamborine Mountain QLD 4272	(07) 5544 3452	www.tamborinemountaindistillery.com
Tamborine Mountain Regional Botanical Gardens	25 Forsythia Dr, Tamborine Mountain QLD 4272		www.tmbotanicgardens.org.au
Witches Falls Winery	79 Main Western Rd, Tamborine Mountain QLD 4272	(07) 5545 2609	witchesfalls.com.au
Bearded Dragon Boutique Hotel	LOT 2 Tamborine Mountain Rd, Tamborine QLD 4270	(07) 5543 6888	www.beardeddragon.com.au
Mountain Sanctuary B&B	161-169 Eagle Heights Rd, Tamborine Mountain QLD 4272	(07) 5545 3297	www.mountainsanctuary.com.au
Southern Cross Tours	Shop T34, Circle on Cavill, Cavill Ave Surfers Paradise QLD 4217	(07) 5574 5041	www.southernrosstours.com.au

cont'd over page

# DIRECTORY cont'd

Business Name	Address	Phone	Website
<b>TAMBORINE MOUNTAIN REGION cont'd</b>			
Australian Outback Opals	1-5 Eagle Heights Rd, Tamborine Mountain QLD 4272	(07) 5545 0888	www.outbackopals.com.au
Eagle Heights Hotel	PO Box 155, Eagle Heights QLD 4271	(07) 5545 3388	www.eagleheightshotel.com.au
Flamingo Tours	520 Pine Ridge Rd, Coombabah QLD 4216	0419 710 583	www.flamingotours.com.au
Lemon Lovers Gelato	PO Box 310, North Tamborine QLD 4273	07 5545 1444	lemon-lovers.business.site
Tall Trees Motel	PO Box 310, North Tamborine QLD 4272	(07) 5545 1242	talltreesmotel.com.au
Tamborine Mountain Garden Club	PO Box 63, North Tamborine QLD 4272	0413 869 220	www.tamborinemountaingardenclub.org.au
Tamborine Rainforest Skywalk	PO BOX 200, North Tamborine QLD 4272	(07) 5545 2333	skywalktamborine.com
North Stores	46 Main St, North Tamborine QLD 4272	0480 344 539	northstores.com.au
<b>CANUNGRA, BEECHMONT &amp; SURROUNDS</b>			
Binna Burra Mountain Lodge	1069 Binna Burra Rd, Beechmont QLD 4211	(07) 5533 3622	www.binnaburrallodge.com.au
Hazelwood Estate	422 Binna Burra Rd, Beechmont QLD 4211	(07) 5602 9710	www.hazelwoodestate.com.au
Park Tours	57-59 Timbarra Dr Beechmont QLD 4211	(07) 5533 3583	www.parktours.com.au
Mountview Alpaca Farm	852 Lamington National Park Rd, Canungra QLD 4275	0490 973 865	www.mountviewfarm.com.au
My Country Escape	29 Christie St, Canungra QLD 4275	(07) 5543 4042	www.mycountryescape.com.au
Pretty Produce	704 Lamington National Park Rd, Canungra QLD 4275	0400 197 846	www.prettyproduce.com.au
Canungra Books and Art	6 Kidston St, Canungra QLD 4275	0418 792 161	www.canungrabooksandart.com.au
Canungra Creek Fingerlimes	72 Double Crossing Rd, Canungra QLD 4275	(07) 5543 5516	www.canungrafingerlimes.com.au
Greenlee Cottages	45 Rymera Rd, Sarabah QLD 4275	(07) 5543 4021	www.greenleecottages.com.au
Country Mile Escape	63 Little Flying Fox Road Flying Fox via Canungra QLD 4275	0419 090 246	www.countrymileescape.com.au
O'Reillys Rainforest Retreat	3582 Lamington National Park Rd, Canungra QLD 4275	1800 688 722	www.oreillys.com.au
Canungra Valley Vineyard	852 Lamington National Park Rd, Canungra QLD 4275	(07) 5543 4011	www.oreillys.com.au/canungra-valley-vineyards
Hot Air Balloon Scenic Rim	81-83 Telemon Street, Beaudesert QLD 4285	(07) 5636 1508	www.hotair.com.au/scenicrim
Sarabah Estate Vineyard	46 Rymera Rd, Sarabah QLD 4275	0409 274 314	www.sarabhaestate.com.au

**DISCLAIMER:** The contents of this publication are believed correct at the time of printing. While every effort has been taken to ensure accuracy, Destination Scenic Rim and dtb! Advertising disclaim all liability and all responsibility for the consequences of errors, incorrect information or changes in the details given, and for any inconvenience sustained by any reader using this drive guide. **PHOTOGRAPHY CREDIT:** Tourism and Events Queensland and Peter Horsfall for the Floating Images Hot Air Balloon image.

## ACKNOWLEDGEMENT



This document was developed with the joint support of the Australian Government and Queensland Government in association with Scenic Rim Regional Council and Destination Scenic Rim Inc. Although funding for this product has been provided by both the Australian and Queensland Governments, the material contained herein does not necessarily represent the views of either Government.

## Driving or riding a motorcycle around the Scenic Rim is a great way to explore.



But before you hit the open road, consider these tips to ensure it's a safe day out for everyone.

### CONSIDERING A DRIVE?

Enjoy the trip and arrange to share the driving on long trips — it's easy to enjoy the scenery when you don't have to focus on the road.

Rest every two hours for at least 15 minutes — with the number of unique places to stop in the Scenic Rim, this one should be easy!

We know there's lots of great wineries and distilleries to visit but consuming alcohol before getting behind the wheel significantly increases your risk of a crash. Ensure you plan a safe way home.

Watch out for wildlife and stock — there's lots of it around here.

Drive to the conditions — you may experience different weather, traffic hazards and sealed and unsealed roads.

Ensure everyone in the car is wearing a seatbelt — it's a simple act that significantly reduces the chances of serious injury in a crash.

Keep an eye out for motorcyclists — the roads round here are popular!

### CONSIDERING A RIDE?

A safe ride is a good ride.

#### BEFORE RIDING:

- › Check your bike's condition and tyre pressure
- › Invest in high quality safety gear
- › Make sure you're rested and in the right head space
- › Ensure pillion passengers know what to do
- › Consider a local motorcycle safety and skill enhancement course: [mypolice.qld.gov.au/logan/](http://mypolice.qld.gov.au/logan/)

#### WHILE YOU'RE RIDING:

- › Talk yourself through corners and challenging parts of the road
- › Look where you want to be so you don't lose your line
- › Obey road rules and avoid risk-taking behaviour
- › Stay out of other motorists' blind spots
- › Don't try to keep up with others. Trust your gut and back off
- › Look out for your fellow riders

A safer ride starts with you.

While enjoying the beautiful Scenic Rim, police want all bush walkers and hikers to have fun and stay safe.

### CONSIDERING A HIKE?

#### BE PREPARED AND ENSURE YOU:

- › Hike with a friend. If you can't, let someone know your hiking plan and anticipated time of return.
- › Research your hike with a trail map and download or pack one you can access without phone service.
- › Check the weather forecast and for fires
- › Consider your fitness level and experience
- › Wear protective and appropriate all-weather clothing and shoes
- › Start your hike early

#### IN YOUR HIKING PACK INCLUDE:

Adequate water and snacks (at least 2 litres or more depending on the hike) / Basic first aid, including a snake bite bandage and space blanket / Torch / Phone battery charge pack / Sunscreen / Insect repellent / Map / Camera

DRIVE

# SCENIC RIM

QUEENSLAND - SUNSHINE STATE



TAMBORINE MOUNTAIN • BEAUDESERT • BOONAH • KALBAR • THE LOST WORLD • RATHDOWNEY  
BEECHMONT • HARRISVILLE • CANUNGRA • ARATULA



[visitscenicrim.com.au](https://visitscenicrim.com.au)